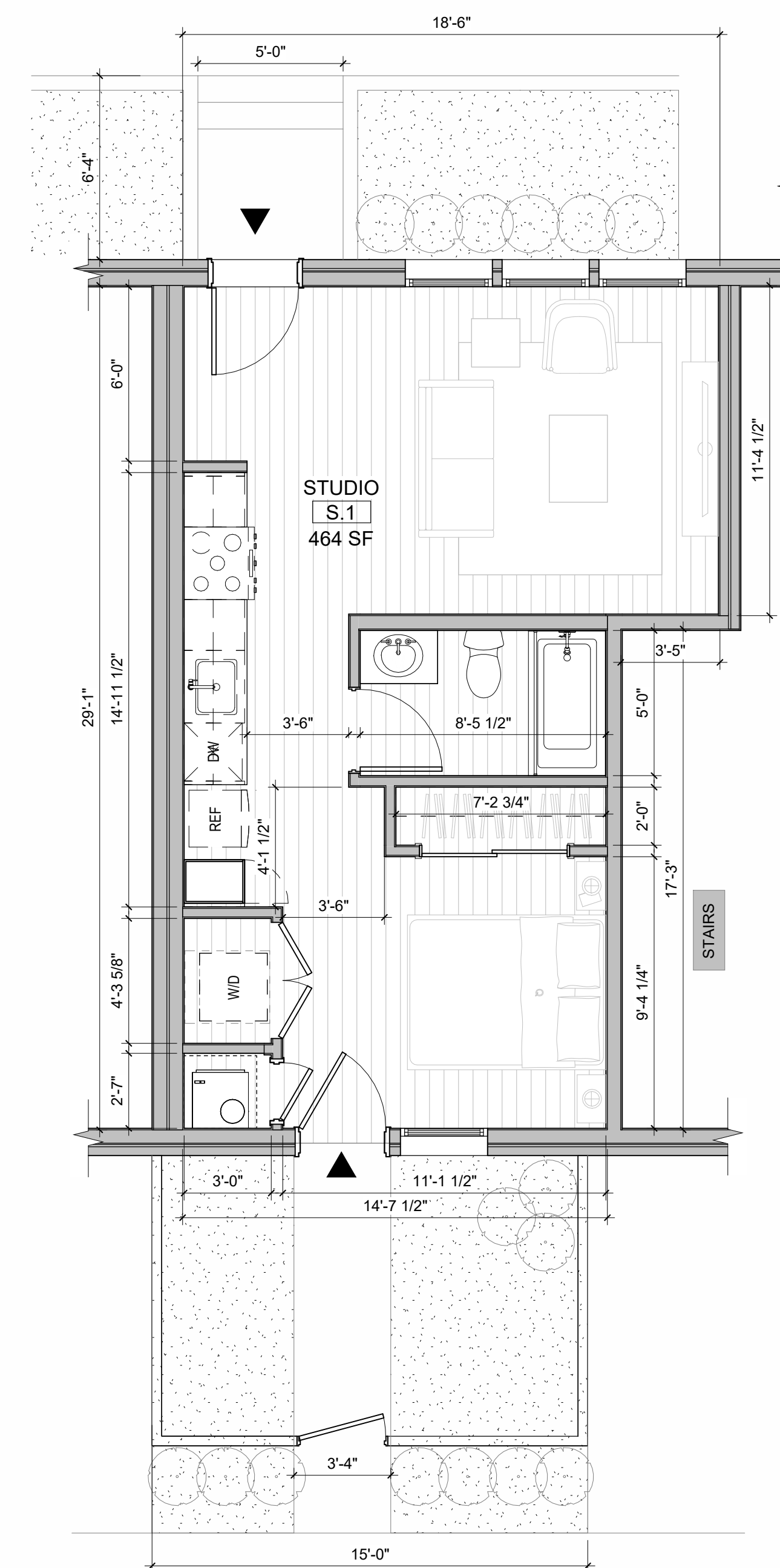


UNIT PLAN SYMBOLS	
	SEMI RECESSED FIRE EXTINGUISHER CABINET WITH FIRE EXTINGUISHER.
	STRUCTURAL COLUMNS, S.S.D.
	60" DIAMETER WHEELCHAIR CLEARANCE
	T-SHAPED TURNING WHEELCHAIR CLEARANCE
	30" X 48" CLEAR FLOOR SPACE
	30" X 60" CLEAR FLOOR SPACE
	WALL TYPE - SEE SHEET XXXX
	WINDOW TYPE - SEE WINDOW SCHEDULE SHEETS
	DOOR TYPE - SEE DOOR SCHEDULE SHEETS
	ROOM NUMBER
	RECESSED MEDICINE CABINET W/ BTM USABLE SHELF AT +44" HT. MAXIMUM
	SLIDE-IN LINEN CABINET
	1 SHELF & 1 POLE
	15" WIDE BREAD BOARD
	30"x60" TUB/SHOWER W/ SURROUND ON 3 WALLS WITH A HEIGHT NOT LESS THAN 72" ABOVE DRAIN INLET. SHOWER HEAD AT +78" SEE INTERIOR ELEVATIONS AND S.P.D.
	LAVATORY S.P.D.
	24" TOWEL BAR AT +40" HT. MAXIMUM TO TOP OF BAR
	TOILET PAPER HOLDER AT +24" HT. TO TOP
	KITCHEN SINK W/ GARBAGE DISPOSAL, S.P.D.
	DISHWASHER W/ DRAIN TO GARBAGE DISPOSAL, S.P.D.
	RANGE HOOD, S.M.D.
	REFRIGERATOR
	DRYER PROVIDE SMOOTH METAL VENT TO EXTERIOR, S.M.D.
	WASHER-PROVIDE HOT & COLD WATER SUPPLY & WASTE LINE W/PAN AND DRAIN TO OUTSIDE AT ALL UPPER FLOOR LOCATIONS, S.P.D.
	STACKED WASHER & DRYER-PROVIDE HOT & COLD WATER SUPPLY & WASTE SUPPLY & WASTE LINE FOR WASHER. PROVIDE SMOOTH METAL VENT TO EXTERIOR FOR DRYER. PROVIDE PAN W/DRAIN TO OUTSIDE AT ALL UPPER FLOOR LOCATIONS, S.P.D., S.M.D.
	FLOOR TYPE TRANSITION
	ELECTRICAL PANEL, S.E.D.
	GRAB BARS

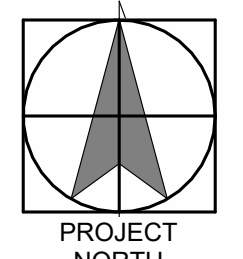
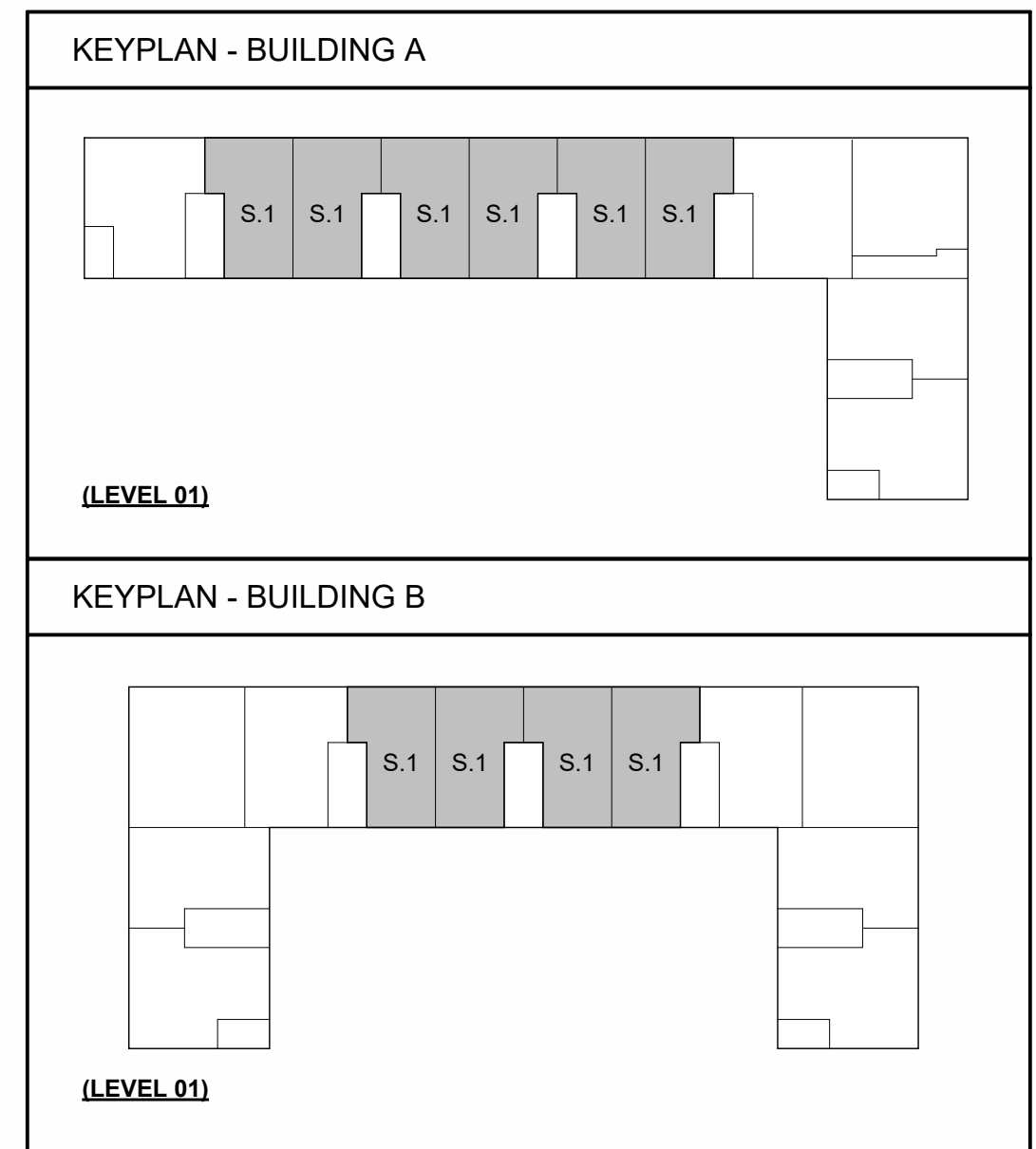
- UNIT PLAN NOTES**
- ALL EXTERIOR DIMENSIONS TO FACE OF STUD, FACE OF FOUNDATION, (U.O.N.)
 - ALL INTERIOR DIMENSIONS TO FACE OF STUD (U.O.N.)
 - ALL DIMENSIONS AT WINDOWS & DOORS ARE TO THE CENTERLINE, (U.O.N.)
 - ALL ANGLED WALLS SHALL BE 45 DEGREES, (U.O.N.)
 - ALL INTERIOR DOOR JAMBS ON HINGE SIDE SHALL BE 4" U.O.N. ALL EXTERIOR DOOR JAMBS ON HINGE SIDE SHALL BE 6" U.O.N.
 - DIMENSIONS FOR TYPICAL UNIT FLOOR PLAN APPLY TO OTHER UNIT TYPES EXCEPT WHERE INDICATED ON VARIATION UNIT PLANS. VARIATION UNIT PLANS INDICATE MODIFICATIONS FROM TYPICAL UNIT PLAN.
 - ALL EXTERIOR WALLS SHALL BE CONSTRUCTED OF 2X6 STUDS, U.O.N., S.S.D.
 - ALL INTERIOR WALLS SHALL BE CONSTRUCTED OF 2X4 STUDS, U.O.N., S.S.D.
 - WINDOW HEAD HEIGHTS: 8'-0" U.O.N.
 - VERIFY APPLIANCE DIMENSIONS PRIOR TO CABINET FABRICATION
 - FOR TYP. FIRE RATED ASSEMBLY DETAILS SEE G3 SERIES.
 - FOR TYP. FIRE RATED PENETRATION DETAILS SEE G3 SERIES.
 - FOR ACCESSIBILITY DETAILS AND NOTES SEE G1 SERIES.
 - FOR DIMENSIONS TO WINDOW AND DOOR OPENINGS REFER TO BUILDING PLAN SHEETS, A2 SERIES.
 - FOR INTERIOR FINISHES, SEE UNIT FINISH SCHEDULE.
 - FOR INTERIOR UNIT DOORS, REFERENCE DOOR SCHEDULE - UNITS.
 - FOR ENTRY DOORS AND PATIO DOORS SEE FLOOR PLANS AND DOOR SCHEDULE - BUILDING.
 - REFERENCE DECK PLANS FOR EXTERIOR DECKS.
 - SEE BUILDING PLANS FOR INTERIOR WALL, PARTY WALL, OR CORRIDOR WALL INFORMATION AND DIMENSIONS.
 - 11B MOBILITY AND COMMUNICATION UNITS TO COMPLY WITH IBC SECTION 11B-809. SEE CODE COMPLIANCE SHEETS FOR DETAILS, G1 SERIES. SEE ELECTRICAL DRAWINGS FOR ADDITIONAL COMMUNICATION FEATURES.
 - RESIDENTIAL DWELLING UNITS WITH COMMUNICATIONS FEATURES PER IBC 11B-809.5 EACH ROOM TO BE PROVIDED WITH THE CAPABILITY OF A FUTURE VISABLE ALARM APPLIANCE. THE SAME VISABLE ALARM APPLIANCE SHALL BE PERMITTED UNIT SMOKE DETECTION, BUILDING FIRE ALARM ACTIVATION, AND CARBON MONOXIDE DETECTION. PROVIDE ONE VISABLE SIGNAL FOR THE DOORBELL WITHIN THE DWELLING UNIT. SEE ELECTRICAL DRAWINGS FOR MORE INFORMATION.

- CEILING PLAN NOTES**
- CEILING HEIGHTS FROM T.O. FINISH FLOOR TO FACE OF CEILING GYP.
 - EXTERIOR SOFFIT HEIGHTS FROM T.O. FINISH FLOOR TO FACE OF EXTERIOR SOFFIT MATERIAL.
 - ALL DIMENSIONS TO F.O. STUD, (U.O.N.)
 - FOR CEILING DIFFUSERS, REGISTERS, AND VENTS TYPES, S.M.D.
 - FOR FURTHER INFORMATION REGARDING CEILING FIXTURES TYPES, S.E.D.
 - LOCATE LIGHTING FIXTURE @ CENTER OF CEILING U.O.N.
 - FOR FURTHER INFORMATION REGARDING FIRE SPRINKLERS AND LOCATIONS SEE DESIGN-BUILD SPRINKLER DRAWINGS. ALL SPRINKLER HEADS SHALL BE LOCATED AT THE CENTER OF CEILING TILES, & SOFFITS TYP. U.O.N. INSTALLER SHALL COORDINATE INSTALLATION WITH OTHER TRADES TO AVOID CONFLICTS.
 - COORDINATE ALL FRAMING AT RECESSED FIXTURE LOCATIONS TO ACCOMMODATE FIXTURE LAYOUT PRIOR TO FRAMING.
 - SOFFIT WIDTH DIMENSIONS ARE FROM FACE OF STUD TO OUTER FINISH EDGE OF SOFFIT GYP. BOARD.
 - SOFFIT LOCATIONS VARY PER UNIT. S.M.D. AND SEE BUILDING PLANS FOR LOCATIONS.
 - STENCIL THE FOLLOWING TEXT: "FIRE AND/OR SMOKE BARRIER - PROTECT ALL OPENINGS" IN CONCEALED SPACE ABOVE CEILINGS ON BOTH SIDES OF 1-HR RATED WALLS



1 UNIT PLAN S.1
1/4" = 1'-0"

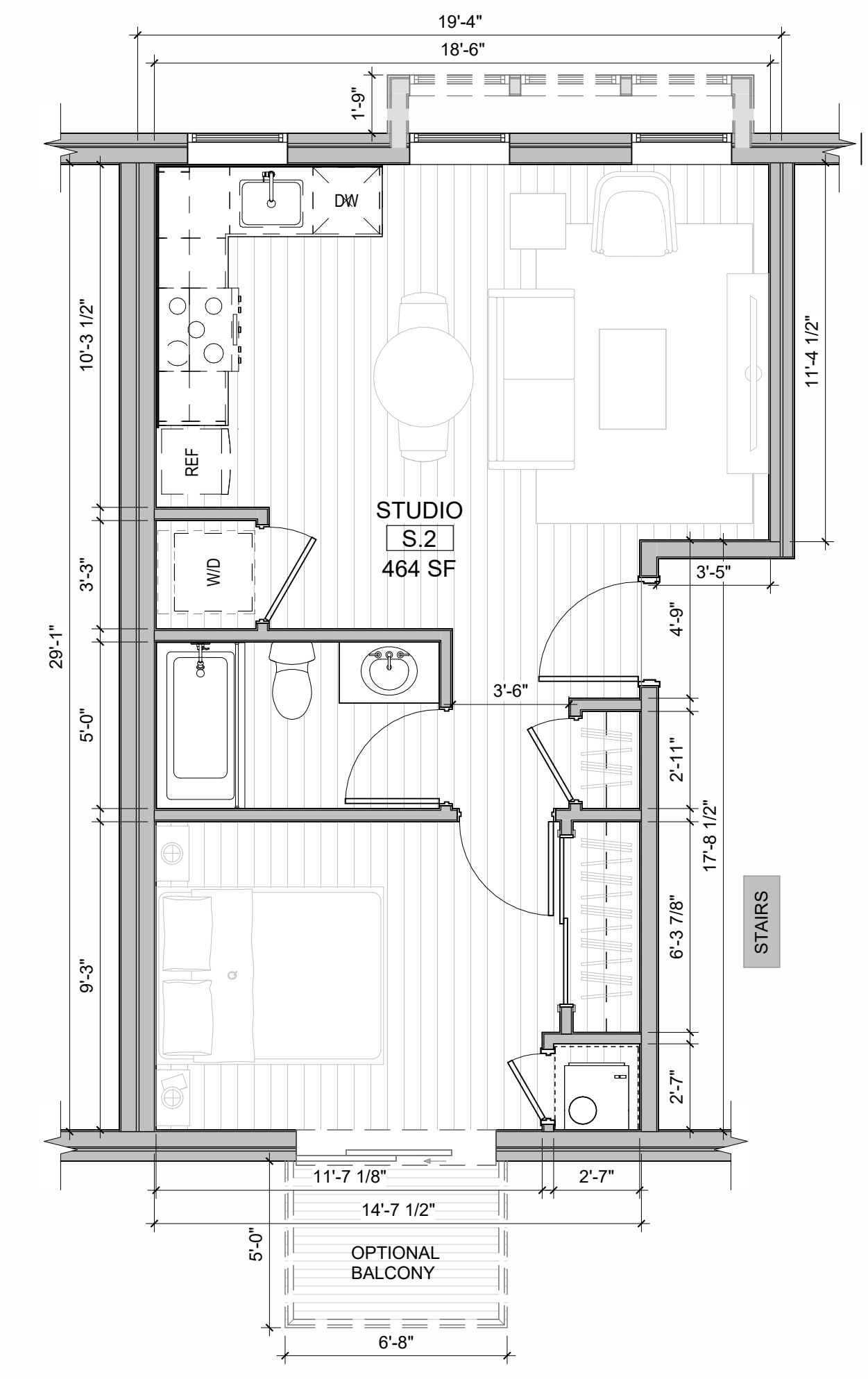
REFLECTED CEILING SYMBOLS	
	INTERIOR FINISH MATERIAL
	GYP BOARD, PAINTED
	ALIGN
	FIRE SPRINKLER
	MECH. REGISTERS (S.M.D.)
	TRANSFER GRILLES
	LIGHT FIXTURES (S.E.D.)
	RANGE HOOD



UNIT PLAN SYMBOLS	
	SEMI RECESSED FIRE EXTINGUISHER CABINET WITH FIRE EXTINGUISHER.
	STRUCTURAL COLUMNS, S.S.D.
	60" DIAMETER WHEELCHAIR CLEARANCE
	T-SHAPED TURNING WHEELCHAIR CLEARANCE
	30" X 48" CLEAR FLOOR SPACE
	30" X 60" CLEAR FLOOR SPACE
	WALL TYPE - SEE SHEET XXXX
	WINDOW TYPE - SEE WINDOW SCHEDULE SHEETS
	DOOR TYPE - SEE DOOR SCHEDULE SHEETS
	ROOM NUMBER
	RECESSED MEDICINE CABINET W/ BTM USABLE SHELF AT +44" HT. MAXIMUM
	SLIDE-IN LINEN CABINET
	1 SHELF & 1 POLE
	15" WIDE BREAD BOARD
	30"x60" TUB/SHOWER W/ SURROUND ON 3 WALLS WITH A HEIGHT NOT LESS THAN 72" ABOVE DRAIN INLET. SHOWER HEAD AT +78" SEE INTERIOR ELEVATIONS AND S.P.D.
	LAVATORY S.P.D.
	24" TOWEL BAR AT +40" HT. MAXIMUM TO TOP OF BAR
	TOILET PAPER HOLDER AT +24" HT. TO TOP
	KITCHEN SINK W/ GARBAGE DISPOSAL, S.P.D.
	DISHWASHER W/ DRAIN TO GARBAGE DISPOSAL, S.P.D.
	FREE STANDING RANGE/OVEN COMBINATION W/HOOD, LIGHT & FAN ABOVE. S.M.D AND S.E.D.
	RANGE HOOD, S.M.D.
	REFRIGERATOR
	DRYER PROVIDE SMOOTH METAL VENT TO EXTERIOR, S.M.D.
	WASHER-PROVIDE HOT & COLD WATER SUPPLY & WASTE LINE W/PAN AND DRAIN TO OUTSIDE AT ALL UPPER FLOOR LOCATIONS, S.P.D.
	STACKED WASHER & DRYER-PROVIDE HOT & COLD WATER SUPPLY & WASTE SUPPLY & WASTE LINE FOR WASHER. PROVIDE SMOOTH METAL VENT TO EXTERIOR FOR DRYER. PROVIDE PAN W/DRAIN TO OUTSIDE AT ALL UPPER FLOOR LOCATIONS, S.P.D., S.M.D.
	FLOOR TYPE TRANSITION
	ELECTRICAL PANEL, S.E.D.
	GRAB BARS

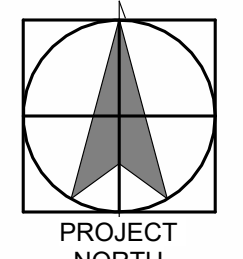
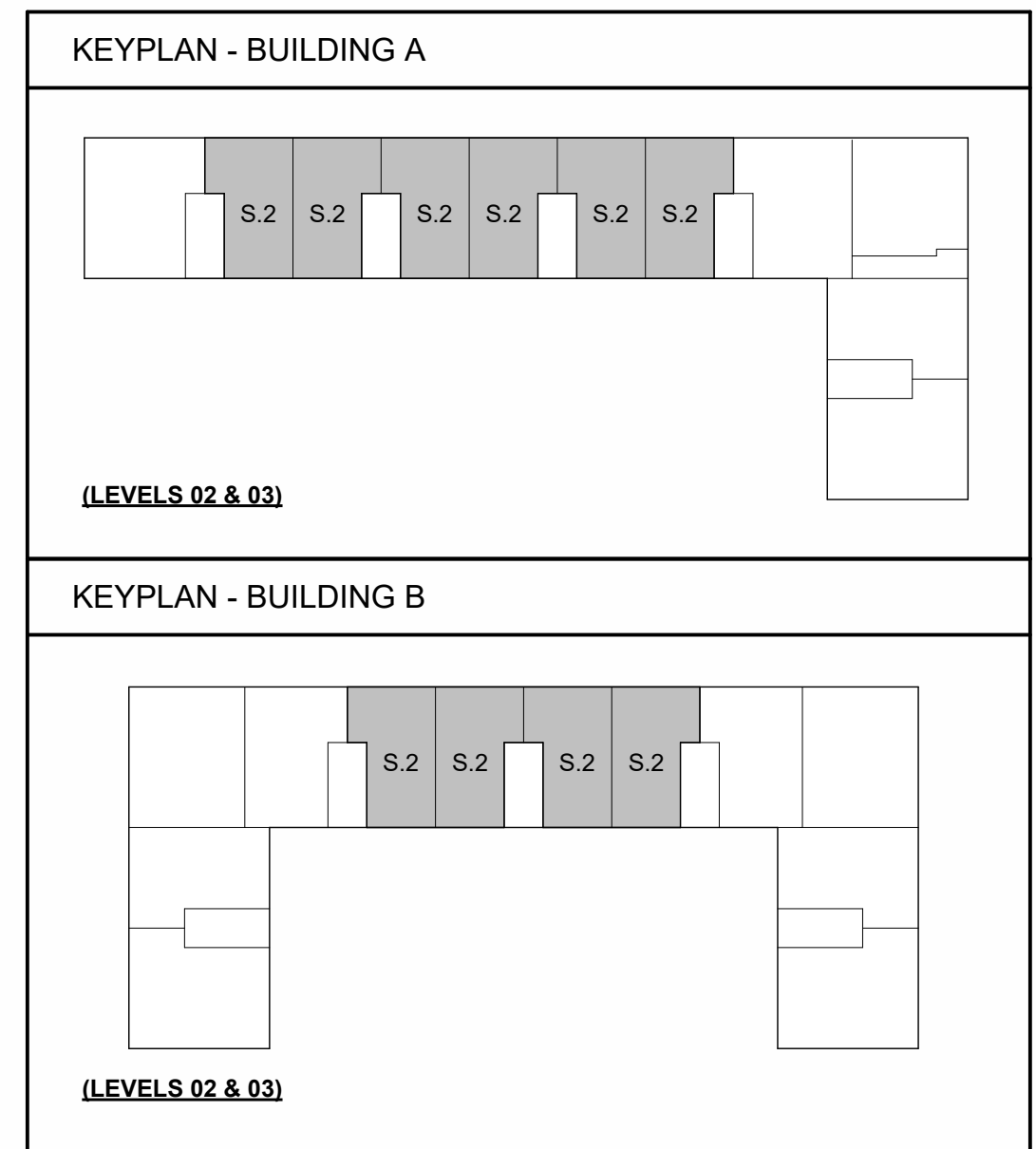
- UNIT PLAN NOTES**
- ALL EXTERIOR DIMENSIONS TO FACE OF STUD, FACE OF FOUNDATION, (U.O.N.)
 - ALL INTERIOR DIMENSIONS TO FACE OF STUD (U.O.N.)
 - ALL DIMENSIONS AT WINDOWS & DOORS ARE TO THE CENTERLINE, (U.O.N.)
 - ALL ANGLED WALLS SHALL BE 45 DEGREES, (U.O.N.)
 - ALL INTERIOR DOOR JAMBS ON HINGE SIDE SHALL BE 4" U.O.N. ALL EXTERIOR DOOR JAMBS ON HINGE SIDE SHALL BE 6" U.O.N.
 - DIMENSIONS FOR TYPICAL UNIT FLOOR PLAN APPLY TO OTHER UNIT TYPES EXCEPT WHERE INDICATED ON VARIATION UNIT PLANS. VARIATION UNIT PLANS INDICATE MODIFICATIONS FROM TYPICAL UNIT PLAN.
 - ALL EXTERIOR WALLS SHALL BE CONSTRUCTED OF 2X4 STUDS, U.O.N., S.S.D.
 - ALL INTERIOR WALLS SHALL BE CONSTRUCTED OF 2X4 STUDS, U.O.N., S.S.D.
 - WINDOW HEAD HEIGHTS: 8'-0" U.O.N.
 - VERIFY APPLIANCE DIMENSIONS PRIOR TO CABINET FABRICATION
 - FOR TYP. FIRE RATED ASSEMBLY DETAILS SEE G3 SERIES.
 - FOR TYP. FIRE RATED PENETRATION DETAILS SEE G3 SERIES.
 - FOR ACCESSIBILITY DETAILS AND NOTES SEE G1 SERIES.
 - FOR DIMENSIONS TO WINDOW AND DOOR OPENINGS REFER TO BUILDING PLAN SHEETS, A2 SERIES.
 - FOR INTERIOR FINISHES, SEE UNIT FINISH SCHEDULE.
 - FOR INTERIOR UNIT DOORS, REFERENCE DOOR SCHEDULE - UNITS.
 - FOR ENTRY DOORS AND PATIO DOORS SEE FLOOR PLANS AND DOOR SCHEDULE - BUILDING.
 - REFERENCE DECK PLANS FOR EXTERIOR DECKS.
 - SEE BUILDING PLANS FOR INTERIOR WALL, PARTY WALL, OR CORRIDOR WALL INFORMATION AND DIMENSIONS.
 - 11B MOBILITY AND COMMUNICATION UNITS TO COMPLY WITH IBC SECTION 11B-809. SEE CODE COMPLIANCE SHEETS FOR DETAILS, G1 SERIES. SEE ELECTRICAL DRAWINGS FOR ADDITIONAL COMMUNICATION FEATURES.
 - RESIDENTIAL DWELLING UNITS WITH COMMUNICATIONS FEATURES PER IBC 11B-809.5 EACH ROOM TO BE PROVIDED WITH THE CAPABILITY OF A FUTURE VISIBLE ALARM APPLIANCE. THE SAME VISIBLE ALARM APPLIANCE SHALL BE PERMITTED UNIT SMOKE DETECTION, BUILDING FIRE ALARM ACTIVATION, AND CARBON MONOXIDE DETECTION. PROVIDE ONE VISIBLE SIGNAL FOR THE DOORBELL WITHIN THE DWELLING UNIT. SEE ELECTRICAL DRAWINGS FOR MORE INFORMATION.

- CEILING PLAN NOTES**
- CEILING HEIGHTS FROM T.O. FINISH FLOOR TO FACE OF CEILING GYP.
 - EXTERIOR SOFFIT HEIGHTS FROM T.O. FINISH FLOOR TO FACE OF EXTERIOR SOFFIT MATERIAL.
 - ALL DIMENSIONS TO F.O. STUD, (U.O.N.)
 - FOR CEILING DIFFUSERS, REGISTERS, AND VENTS TYPES, S.M.D.
 - FOR FURTHER INFORMATION REGARDING CEILING FIXTURES TYPES, S.E.D.
 - LOCATE LIGHTING FIXTURE @ CENTER OF CEILING U.O.N.
 - FOR FURTHER INFORMATION REGARDING FIRE SPRINKLERS AND LOCATIONS SEE DESIGN-BUILD SPRINKLER DRAWINGS. ALL SPRINKLER HEADS SHALL BE LOCATED AT THE CENTER OF CEILING TILES, & SOFFITS TYP. U.O.N. INSTALLER SHALL COORDINATE INSTALLATION WITH OTHER TRADES TO AVOID CONFLICTS.
 - COORDINATE ALL FRAMING AT RECESSED FIXTURE LOCATIONS TO ACCOMMODATE FIXTURE LAYOUT PRIOR TO FRAMING.
 - SOFFIT WIDTH DIMENSIONS ARE FROM FACE OF STUD TO OUTER FINISH EDGE OF SOFFIT GYP. BOARD.
 - SOFFIT LOCATIONS VARY PER UNIT. S.M.D. AND SEE BUILDING PLANS FOR LOCATIONS.
 - STENCIL THE FOLLOWING TEXT: "FIRE AND/OR SMOKE BARRIER - PROTECT ALL OPENINGS" IN CONCEALED SPACE ABOVE CEILINGS ON BOTH SIDES OF 1-HR RATED WALLS



1 UNIT PLAN S.2
1/4" = 1'-0"

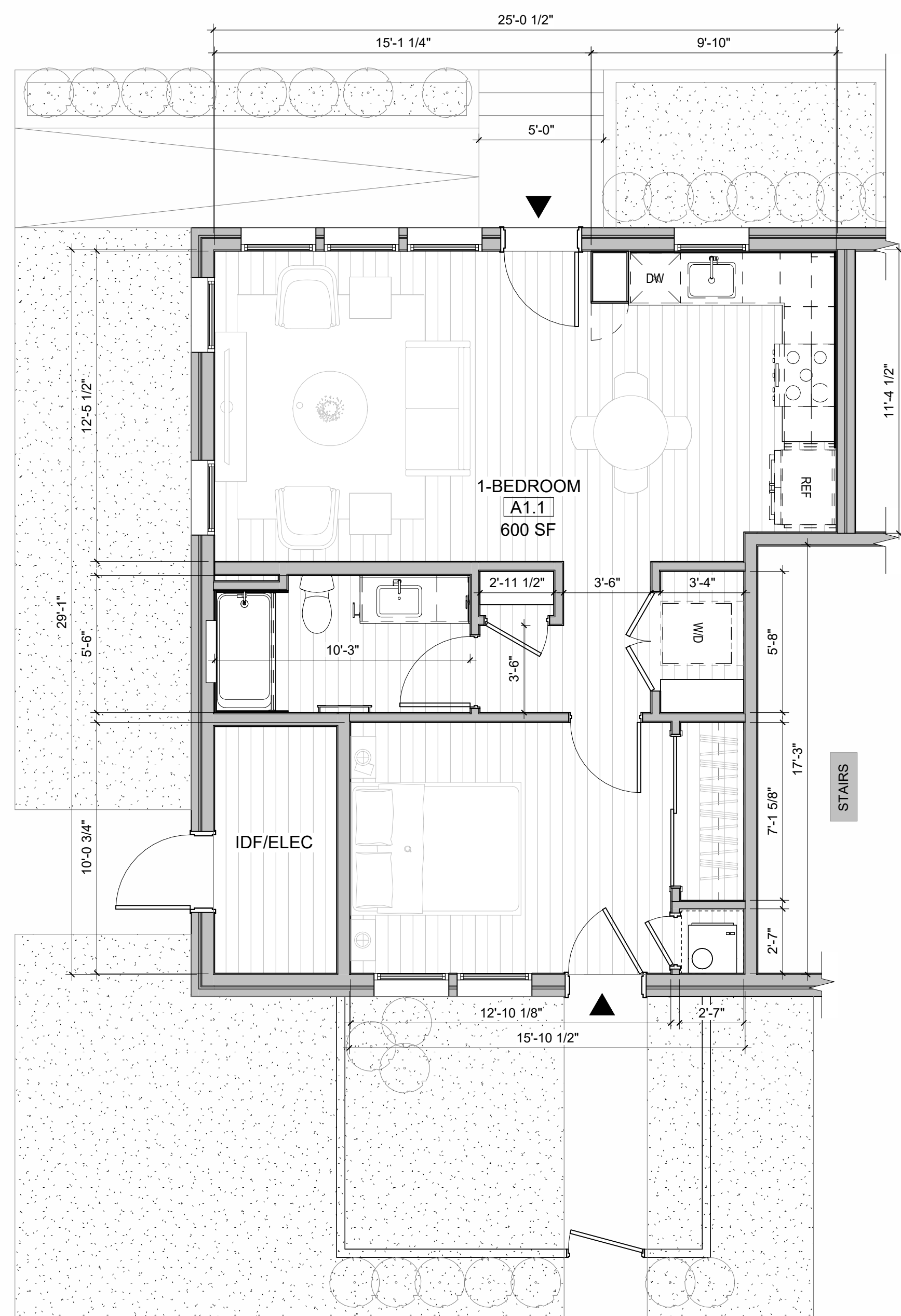
REFLECTED CEILING SYMBOLS	
	INTERIOR FINISH MATERIAL
	GYP BOARD, PAINTED
	ALIGN
	FIRE SPRINKLER
	MECH. REGISTERS (S.M.D.)
	TRANSFER GRILLES
	LIGHT FIXTURES (S.E.D.)
	RANGE HOOD



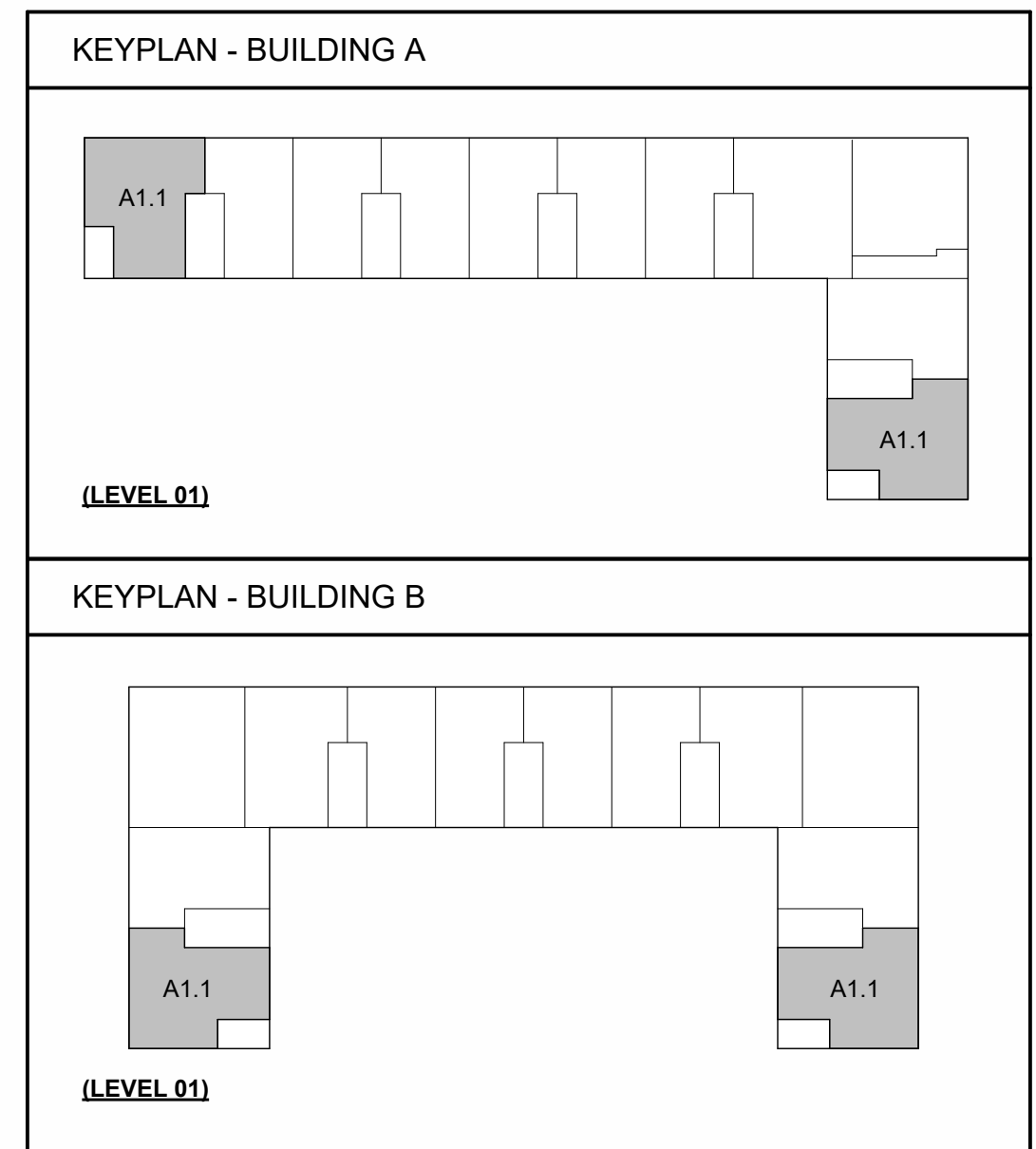
UNIT PLAN SYMBOLS	
	SEMI RECESSED FIRE EXTINGUISHER CABINET WITH FIRE EXTINGUISHER.
	STRUCTURAL COLUMNS, S.S.D.
	60" DIAMETER WHEELCHAIR CLEARANCE
	T-SHAPED TURNING WHEELCHAIR CLEARANCE
	30" X 48" CLEAR FLOOR SPACE
	30" X 60" CLEAR FLOOR SPACE
	WALL TYPE - SEE SHEET XXXX
	WINDOW TYPE - SEE WINDOW SCHEDULE SHEETS
	DOOR TYPE - SEE DOOR SCHEDULE SHEETS
	ROOM NUMBER
	RECESSED MEDICINE CABINET W/ BTM USABLE SHELF AT +4' HT. MAXIMUM
	SLIDE-IN LINEN CABINET
	1 SHELF & 1 POLE
	15" WIDE BREAD BOARD
	30"x60" TUB/SHOWER W/ SURROUND ON 3 WALLS WITH A HEIGHT NOT LESS THAN 72" ABOVE DRAIN INLET. SHOWER HEAD AT +78" SEE INTERIOR ELEVATIONS AND S.P.D.
	LAVATORY S.P.D.
	24" TOWEL BAR AT +40" HT. MAXIMUM TO TOP OF BAR
	TOILET PAPER HOLDER AT +24" HT. TO TOP
	KITCHEN SINK W/ GARBAGE DISPOSAL, S.P.D.
	DISHWASHER W/ DRAIN TO GARBAGE DISPOSAL, S.P.D.
	FREE STANDING RANGE/OVEN COMBINATION W/HOOD, LIGHT & FAN ABOVE. S.M.D AND S.E.D.
	RANGE HOOD, S.M.D.
	REFRIGERATOR
	DRYER PROVIDE SMOOTH METAL VENT TO EXTERIOR, S.M.D.
	WASHER-PROVIDE HOT & COLD WATER SUPPLY & WASTE LINE W/PAN AND DRAIN TO OUTSIDE AT ALL UPPER FLOOR LOCATIONS, S.P.D.
	STACKED WASHER & DRYER-PROVIDE HOT & COLD WATER SUPPLY & WASTE SUPPLY & WASTE LINE FOR WASHER. PROVIDE SMOOTH METAL VENT TO EXTERIOR FOR DRYER. PROVIDE PAN W/DRAIN TO OUTSIDE AT ALL UPPER FLOOR LOCATIONS, S.P.D., S.M.D.
	FLOOR TYPE TRANSITION
	ELECTRICAL PANEL, S.E.D.
	GRAB BARS

- UNIT PLAN NOTES**
- ALL EXTERIOR DIMENSIONS TO FACE OF STUD, FACE OF FOUNDATION, (U.O.N.)
 - ALL INTERIOR DIMENSIONS TO FACE OF STUD (U.O.N.)
 - ALL DIMENSIONS AT WINDOWS & DOORS ARE TO THE CENTERLINE, (U.O.N.)
 - ALL ANGLED WALLS SHALL BE 45 DEGREES, (U.O.N.)
 - ALL INTERIOR DOOR JAMBS ON HINGE SIDE SHALL BE 4" U.O.N. ALL EXTERIOR DOOR JAMBS ON HINGE SIDE SHALL BE 6" U.O.N.
 - DIMENSIONS FOR TYPICAL UNIT FLOOR PLAN APPLY TO OTHER UNIT TYPES EXCEPT WHERE INDICATED ON VARIATION UNIT PLANS. VARIATION UNIT PLANS INDICATE MODIFICATIONS FROM TYPICAL UNIT PLAN.
 - ALL EXTERIOR WALLS SHALL BE CONSTRUCTED OF 2X4 STUDS, U.O.N., S.S.D.
 - ALL INTERIOR WALLS SHALL BE CONSTRUCTED OF 2X4 STUDS, U.O.N., S.S.D.
 - WINDOW HEAD HEIGHTS: 8'-0" U.O.N.
 - VERIFY APPLIANCE DIMENSIONS PRIOR TO CABINET FABRICATION
 - FOR TYP. FIRE RATED ASSEMBLY DETAILS SEE G3 SERIES.
 - FOR TYP. FIRE RATED PENETRATION DETAILS SEE G3 SERIES.
 - FOR ACCESSIBILITY DETAILS AND NOTES SEE G1 SERIES.
 - FOR DIMENSIONS TO WINDOW AND DOOR OPENINGS REFER TO BUILDING PLAN SHEETS, AA SERIES.
 - FOR INTERIOR FINISHES, SEE UNIT FINISH SCHEDULE.
 - FOR INTERIOR UNIT DOORS, REFERENCE DOOR SCHEDULE - UNITS.
 - FOR ENTRY DOORS AND PATIO DOORS SEE FLOOR PLANS AND DOOR SCHEDULE - BUILDING.
 - REFERENCE DECK PLANS FOR EXTERIOR DECKS.
 - SEE BUILDING PLANS FOR INTERIOR WALL, PARTY WALL, OR CORRIDOR WALL INFORMATION AND DIMENSIONS.
 - 11B MOBILITY AND COMMUNICATION UNITS TO COMPLY WITH IBC SECTION 11B-809. SEE CODE COMPLIANCE SHEETS FOR DETAILS, G1 SERIES. SEE ELECTRICAL DRAWINGS FOR ADDITIONAL COMMUNICATION FEATURES.
 - RESIDENTIAL DWELLING UNITS WITH COMMUNICATIONS FEATURES PER IBC 11B-809.5 EACH ROOM TO BE PROVIDED WITH THE CAPABILITY OF A FUTURE VISIBLE ALARM APPLIANCE. THE SAME VISIBLE ALARM APPLIANCE SHALL BE PERMITTED UNIT SMOKE DETECTION, BUILDING FIRE ALARM ACTIVATION, AND CARBON MONOXIDE DETECTION. PROVIDE ONE VISIBLE SIGNAL FOR THE DOORBELL WITHIN THE DWELLING UNIT. SEE ELECTRICAL DRAWINGS FOR MORE INFORMATION.

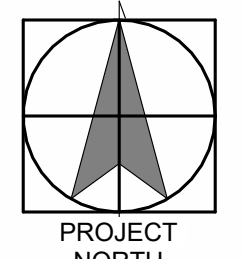
- CEILING PLAN NOTES**
- CEILING HEIGHTS FROM T.O. FINISH FLOOR TO FACE OF CEILING GYP.
 - EXTERIOR SOFFIT HEIGHTS FROM T.O. FINISH FLOOR TO FACE OF EXTERIOR SOFFIT MATERIAL.
 - ALL DIMENSIONS TO F.O. STUD, (U.O.N.)
 - FOR CEILING DIFFUSERS, REGISTERS, AND VENTS TYPES, S.M.D.
 - FOR FURTHER INFORMATION REGARDING CEILING FIXTURES TYPES, S.E.D.
 - LOCATE LIGHTING FIXTURE @ CENTER OF CEILING U.O.N.
 - FOR FURTHER INFORMATION REGARDING FIRE SPRINKLERS AND LOCATIONS SEE DESIGN-BUILD SPRINKLER DRAWINGS. ALL SPRINKLER HEADS SHALL BE LOCATED AT THE CENTER OF CEILING TILES, & SOFFITS TYP. U.O.N. INSTALLER SHALL COORDINATE INSTALLATION WITH OTHER TRADES TO AVOID CONFLICTS.
 - COORDINATE ALL FRAMING AT RECESSED FIXTURE LOCATIONS TO ACCOMMODATE FIXTURE LAYOUT PRIOR TO FRAMING.
 - SOFFIT WIDTH DIMENSIONS ARE FROM FACE OF STUD TO OUTER FINISH EDGE OF SOFFIT GYP. BOARD.
 - SOFFIT LOCATIONS VARY PER UNIT. S.M.D. AND SEE BUILDING PLANS FOR LOCATIONS.
 - STENCIL THE FOLLOWING TEXT: "FIRE AND/OR SMOKE BARRIER - PROTECT ALL OPENINGS" IN CONCEALED SPACE ABOVE CEILINGS ON BOTH SIDES OF 1-HR RATED WALLS



REFLECTED CEILING SYMBOLS	
	INTERIOR FINISH MATERIAL
	GYP BOARD, PAINTED
	ALIGN
	FIRE SPRINKLER
	MECH. REGISTERS (S.M.D.)
	TRANSFER GRILLES
	LIGHT FIXTURES (S.E.D.)
	RANGE HOOD



1 UNIT PLAN A1.1
1/4" = 1'-0"

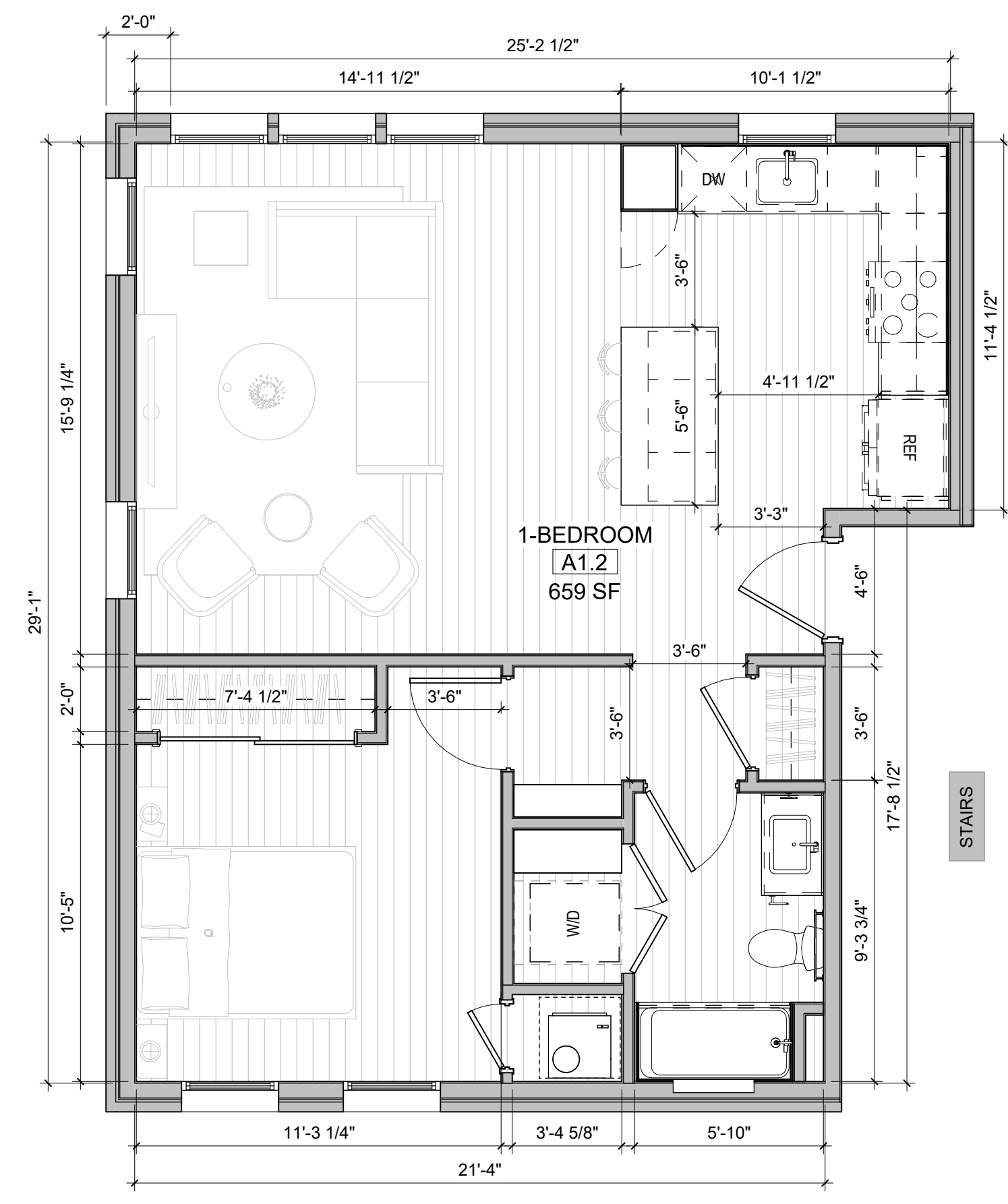
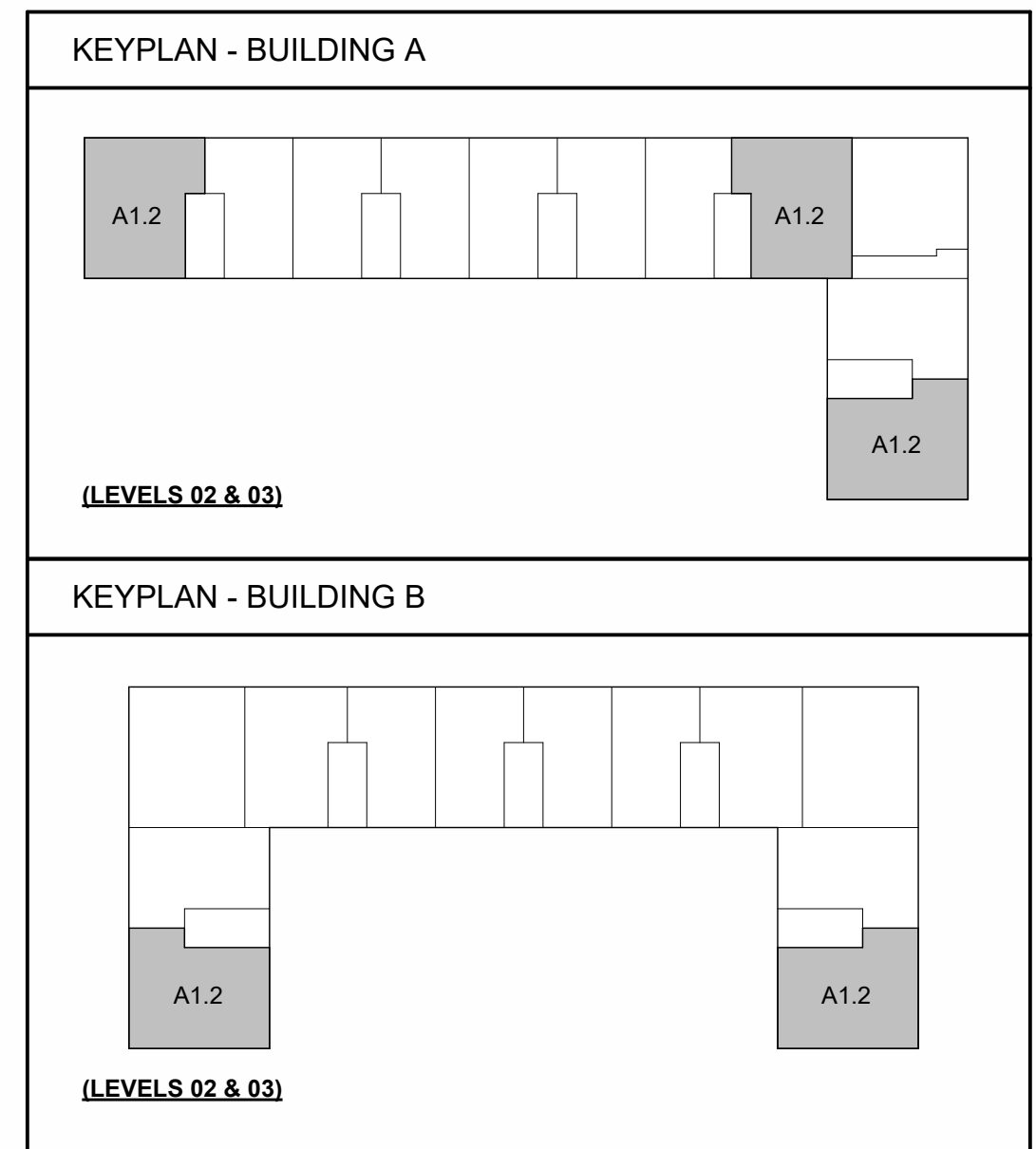


UNIT PLAN SYMBOLS	
	SEMI RECESSED FIRE EXTINGUISHER CABINET WITH FIRE EXTINGUISHER.
	STRUCTURAL COLUMNS, S.S.D.
	60" DIAMETER WHEELCHAIR CLEARANCE
	T-SHAPED TURNING WHEELCHAIR CLEARANCE
	30" X 48" CLEAR FLOOR SPACE
	30" X 60" CLEAR FLOOR SPACE
	WALL TYPE - SEE SHEET XXXX
	WINDOW TYPE - SEE WINDOW SCHEDULE SHEETS
	DOOR TYPE - SEE DOOR SCHEDULE SHEETS
	ROOM NUMBER
	RECESSED MEDICINE CABINET W/ BTM USABLE SHELF AT +44" HT. MAXIMUM
	SLIDE-IN LINEN CABINET
	1 SHELF & 1 POLE
	15" WIDE BREAD BOARD
	30"x60" TUB/SHOWER W/ SURROUND ON 3 WALLS WITH A HEIGHT NOT LESS THAN 72" ABOVE DRAIN INLET. SHOWER HEAD AT +78" SEE INTERIOR ELEVATIONS AND S.P.D.
	LAVATORY S.P.D.
	LAVATORY S.P.D.
	24" TOWEL BAR AT +40" HT. MAXIMUM TO TOP OF BAR
	TOILET PAPER HOLDER AT +24" HT. TO TOP
	KITCHEN SINK W/ GARBAGE DISPOSAL, S.P.D.
	DISHWASHER W/ DRAIN TO GARBAGE DISPOSAL, S.P.D.
	FREE STANDING RANGE/OVEN COMBINATION W/HOOD, LIGHT & FAN ABOVE. S.M.D AND S.E.D.
	RANGE HOOD, S.M.D.
	REFRIGERATOR
	DRYER PROVIDE SMOOTH METAL VENT TO EXTERIOR, S.M.D.
	WASHER-PROVIDE HOT & COLD WATER SUPPLY & WASTE LINE W/PAN AND DRAIN TO OUTSIDE AT ALL UPPER FLOOR LOCATIONS, S.P.D.
	STACKED WASHER & DRYER-PROVIDE HOT & COLD WATER SUPPLY & WASTE SUPPLY & WASTE LINE FOR WASHER. PROVIDE SMOOTH METAL VENT TO EXTERIOR FOR DRYER. PROVIDE PAN W/DRAIN TO OUTSIDE AT ALL UPPER FLOOR LOCATIONS, S.P.D., S.M.D.
	FLOOR TYPE TRANSITION
	ELECTRICAL PANEL, S.E.D.
	GRAB BARS

- UNIT PLAN NOTES**
- ALL EXTERIOR DIMENSIONS TO FACE OF STUD, FACE OF FOUNDATION, (U.O.N.)
 - ALL INTERIOR DIMENSIONS TO FACE OF STUD (U.O.N.)
 - ALL DIMENSIONS AT WINDOWS & DOORS ARE TO THE CENTERLINE, (U.O.N.)
 - ALL ANGLED WALLS SHALL BE 45 DEGREES, (U.O.N.)
 - ALL INTERIOR DOOR JAMBS ON HINGE SIDE SHALL BE 4" U.O.N. ALL EXTERIOR DOOR JAMBS ON HINGE SIDE SHALL BE 6" U.O.N.
 - DIMENSIONS FOR TYPICAL UNIT FLOOR PLAN APPLY TO OTHER UNIT TYPES EXCEPT WHERE INDICATED ON VARIATION UNIT PLANS. VARIATION UNIT PLANS INDICATE MODIFICATIONS FROM TYPICAL UNIT PLAN.
 - ALL EXTERIOR WALLS SHALL BE CONSTRUCTED OF 2X4 STUDS, U.O.N., S.S.D.
 - ALL INTERIOR WALLS SHALL BE CONSTRUCTED OF 2X4 STUDS, U.O.N., S.S.D.
 - WINDOW HEAD HEIGHTS: 8'-0" U.O.N.
 - VERIFY APPLIANCE DIMENSIONS PRIOR TO CABINET FABRICATION
 - FOR TYP. FIRE RATED ASSEMBLY DETAILS SEE G3 SERIES.
 - FOR TYP. FIRE RATED PENETRATION DETAILS SEE G3 SERIES.
 - FOR ACCESSIBILITY DETAILS AND NOTES SEE G1 SERIES.
 - FOR DIMENSIONS TO WINDOW AND DOOR OPENINGS REFER TO BUILDING PLAN SHEETS, A2 SERIES.
 - FOR INTERIOR FINISHES, SEE UNIT FINISH SCHEDULE.
 - FOR INTERIOR UNIT DOORS, REFERENCE DOOR SCHEDULE - UNITS.
 - FOR ENTRY DOORS AND PATIO DOORS SEE FLOOR PLANS AND DOOR SCHEDULE - BUILDING.
 - REFERENCE DECK PLANS FOR EXTERIOR DECKS.
 - SEE BUILDING PLANS FOR INTERIOR WALL, PARTY WALL, OR CORRIDOR WALL INFORMATION AND DIMENSIONS.
 - 11B MOBILITY AND COMMUNICATION UNITS TO COMPLY WITH IBC SECTION 11B-809. SEE CODE COMPLIANCE SHEETS FOR DETAILS, G1 SERIES. SEE ELECTRICAL DRAWINGS FOR ADDITIONAL COMMUNICATION FEATURES.
 - RESIDENTIAL DWELLING UNITS WITH COMMUNICATIONS FEATURES PER IBC 11B-809.5 EACH ROOM TO BE PROVIDED WITH THE CAPABILITY OF A FUTURE VISIBLE ALARM APPLIANCE. THE SAME VISIBLE ALARM APPLIANCE SHALL BE PERMITTED UNIT SMOKE DETECTION, BUILDING FIRE ALARM ACTIVATION, AND CARBON MONOXIDE DETECTION. PROVIDE ONE VISIBLE SIGNAL FOR THE DOORBELL WITHIN THE DWELLING UNIT. SEE ELECTRICAL DRAWINGS FOR MORE INFORMATION.

- CEILING PLAN NOTES**
- CEILING HEIGHTS FROM T.O. FINISH FLOOR TO FACE OF CEILING GYP.
 - EXTERIOR SOFFIT HEIGHTS FROM T.O. FINISH FLOOR TO FACE OF EXTERIOR SOFFIT MATERIAL.
 - ALL DIMENSIONS TO F.O. STUD, (U.O.N.)
 - FOR CEILING DIFFUSERS, REGISTERS, AND VENTS TYPES, S.M.D.
 - FOR FURTHER INFORMATION REGARDING CEILING FIXTURES TYPES, S.E.D.
 - LOCATE LIGHTING FIXTURE @ CENTER OF CEILING U.O.N.
 - FOR FURTHER INFORMATION REGARDING FIRE SPRINKLERS AND LOCATIONS SEE DESIGN-BUILD SPRINKLER DRAWINGS. ALL SPRINKLER HEADS SHALL BE LOCATED AT THE CENTER OF CEILING TILES, & SOFFITS TYP. U.O.N. INSTALLER SHALL COORDINATE INSTALLATION WITH OTHER TRADES TO AVOID CONFLICTS.
 - COORDINATE ALL FRAMING AT RECESSED FIXTURE LOCATIONS TO ACCOMMODATE FIXTURE LAYOUT PRIOR TO FRAMING.
 - SOFFIT WIDTH DIMENSIONS ARE FROM FACE OF STUD TO OUTER FINISH EDGE OF SOFFIT GYP. BOARD.
 - SOFFIT LOCATIONS VARY PER UNIT. S.M.D. AND SEE BUILDING PLANS FOR LOCATIONS.
 - STENCIL THE FOLLOWING TEXT: "FIRE AND/OR SMOKE BARRIER - PROTECT ALL OPENINGS" IN CONCEALED SPACE ABOVE CEILINGS ON BOTH SIDES OF 1-HR RATED WALLS

REFLECTED CEILING SYMBOLS	
	INTERIOR FINISH MATERIAL
	GYP BOARD, PAINTED
	ALIGN
	FIRE SPRINKLER
	MECH. REGISTERS (S.M.D.)
	TRANSFER GRILLES
	RANGE HOOD
	LIGHT FIXTURES (S.E.D.)

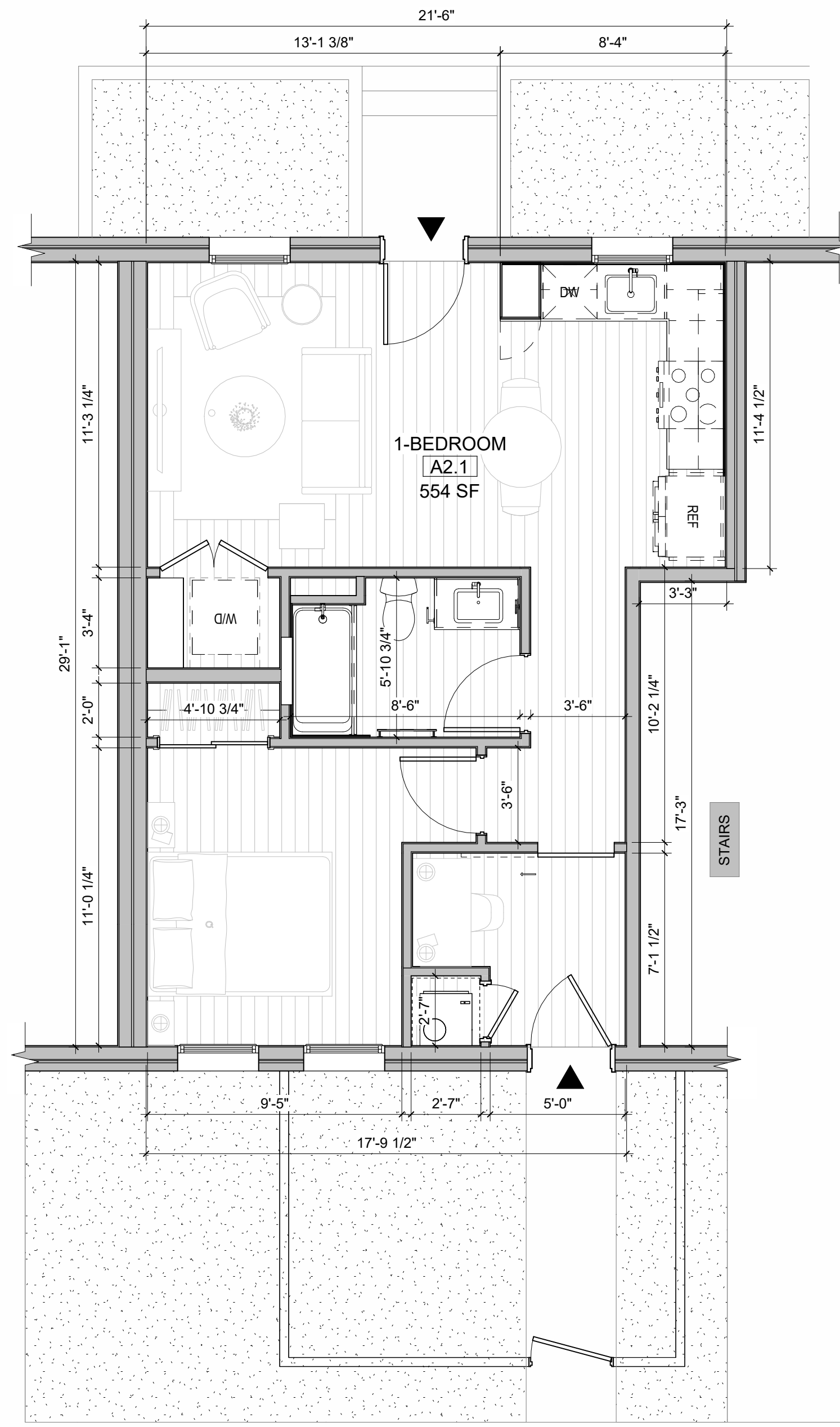


1 UNIT PLAN A1.2
1/4" = 1'-0"

UNIT PLAN SYMBOLS	
	SEMI RECESSED FIRE EXTINGUISHER CABINET WITH FIRE EXTINGUISHER.
	STRUCTURAL COLUMNS, S.S.D.
	60" DIAMETER WHEELCHAIR CLEARANCE
	T-SHAPED TURNING WHEELCHAIR CLEARANCE
	30" X 48" CLEAR FLOOR SPACE
	30" X 60" CLEAR FLOOR SPACE
	WALL TYPE - SEE SHEET XXXX
	WINDOW TYPE - SEE WINDOW SCHEDULE SHEETS
	DOOR TYPE - SEE DOOR SCHEDULE SHEETS
	ROOM NUMBER
	RECESSED MEDICINE CABINET W/ BTM USABLE SHELF AT +44" HT. MAXIMUM
	SLIDE-IN LINEN CABINET
	1 SHELF & 1 POLE
	15" WIDE BREAD BOARD
	30"x60" TUB/SHOWER W/ SURROUND ON 3 WALLS WITH A HEIGHT NOT LESS THAN 72" ABOVE DRAIN INLET. SHOWER HEAD AT +78" SEE INTERIOR ELEVATIONS AND S.P.D.
	LAVATORY S.P.D.
	24" TOWEL BAR AT +40" HT. MAXIMUM TO TOP OF BAR
	TOILET PAPER HOLDER AT +24" HT. TO TOP
	KITCHEN SINK W/ GARBAGE DISPOSAL, S.P.D.
	DISHWASHER W/ DRAIN TO GARBAGE DISPOSAL, S.P.D.
	FREE STANDING RANGE/OVEN COMBINATION W/HOOD, LIGHT & FAN ABOVE. S.M.D AND S.E.D.
	RANGE HOOD, S.M.D.
	REFRIGERATOR
	DRYER PROVIDE SMOOTH METAL VENT TO EXTERIOR, S.M.D.
	WASHER-PROVIDE HOT & COLD WATER SUPPLY & WASTE LINE W/PAN AND DRAIN TO OUTSIDE AT ALL UPPER FLOOR LOCATIONS, S.P.D.
	STACKED WASHER & DRYER-PROVIDE HOT & COLD WATER SUPPLY & WASTE SUPPLY & WASTE LINE FOR WASHER. PROVIDE SMOOTH METAL VENT TO EXTERIOR FOR DRYER. PROVIDE PAN W/DRAIN TO OUTSIDE AT ALL UPPER FLOOR LOCATIONS, S.P.D., S.M.D.
	FLOOR TYPE TRANSITION
	ELECTRICAL PANEL, S.E.D.
	GRAB BARS

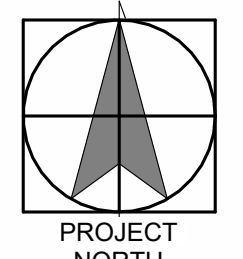
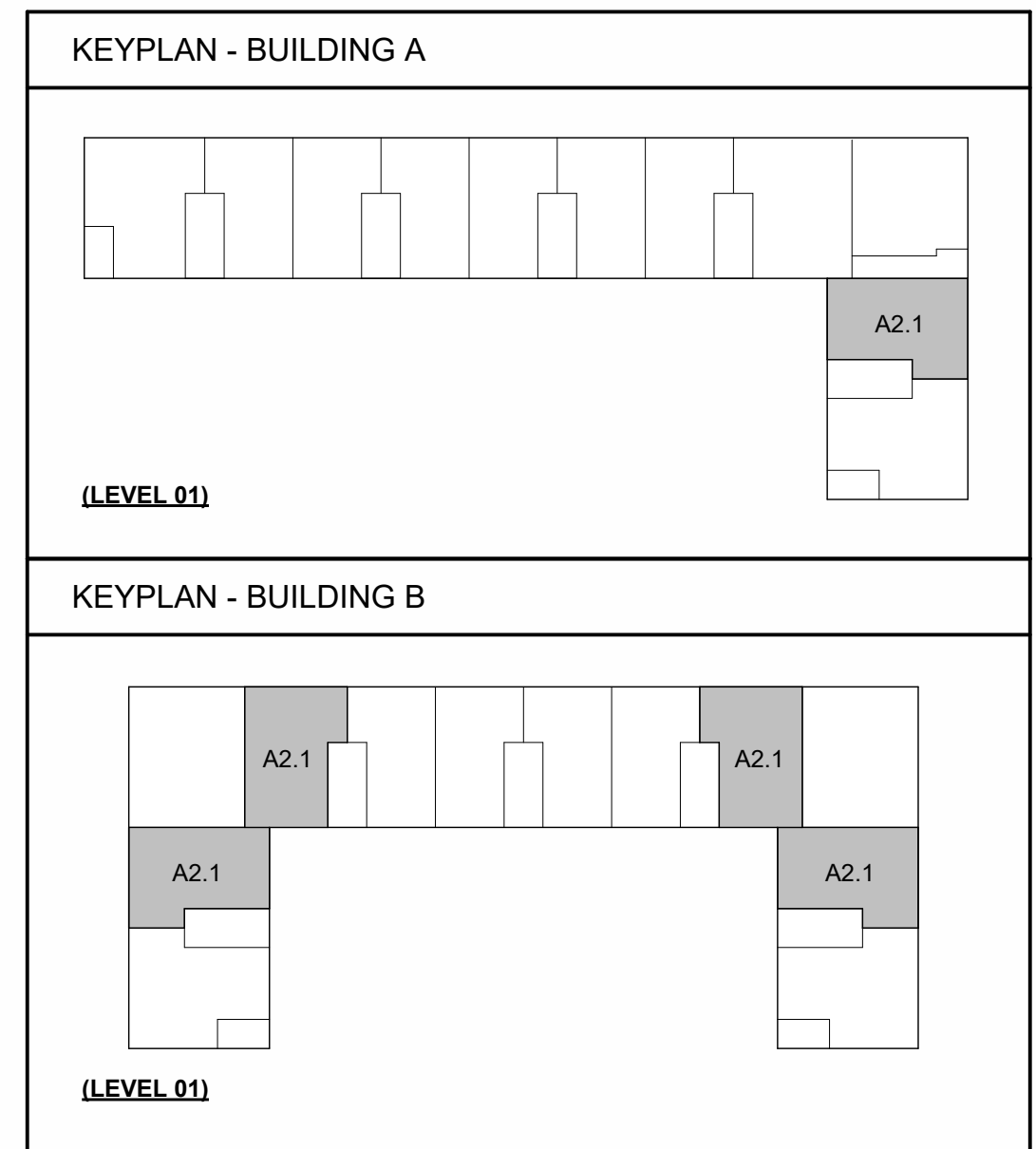
- UNIT PLAN NOTES**
- ALL EXTERIOR DIMENSIONS TO FACE OF STUD, FACE OF FOUNDATION, (U.O.N.)
 - ALL INTERIOR DIMENSIONS TO FACE OF STUD (U.O.N.)
 - ALL DIMENSIONS AT WINDOWS & DOORS ARE TO THE CENTERLINE, (U.O.N.)
 - ALL ANGLED WALLS SHALL BE 45 DEGREES, (U.O.N.)
 - ALL INTERIOR DOOR JAMBS ON HINGE SIDE SHALL BE 4" U.O.N. ALL EXTERIOR DOOR JAMBS ON HINGE SIDE SHALL BE 6" U.O.N.
 - DIMENSIONS FOR TYPICAL UNIT FLOOR PLAN APPLY TO OTHER UNIT TYPES EXCEPT WHERE INDICATED ON VARIATION UNIT PLANS. VARIATION UNIT PLANS INDICATE MODIFICATIONS FROM TYPICAL UNIT PLAN.
 - ALL EXTERIOR WALLS SHALL BE CONSTRUCTED OF 2X4 STUDS, U.O.N., S.S.D.
 - ALL INTERIOR WALLS SHALL BE CONSTRUCTED OF 2X4 STUDS, U.O.N., S.S.D.
 - WINDOW HEAD HEIGHTS: 8'-0" U.O.N.
 - VERIFY APPLIANCE DIMENSIONS PRIOR TO CABINET FABRICATION
 - FOR TYP. FIRE RATED ASSEMBLY DETAILS SEE G3 SERIES.
 - FOR TYP. FIRE RATED PENETRATION DETAILS SEE G3 SERIES.
 - FOR ACCESSIBILITY DETAILS AND NOTES SEE G1 SERIES.
 - FOR DIMENSIONS TO WINDOW AND DOOR OPENINGS REFER TO BUILDING PLAN SHEETS, A2 SERIES.
 - FOR INTERIOR FINISHES, SEE UNIT FINISH SCHEDULE.
 - FOR INTERIOR UNIT DOORS, REFERENCE DOOR SCHEDULE - UNITS.
 - FOR ENTRY DOORS AND PATIO DOORS SEE FLOOR PLANS AND DOOR SCHEDULE - BUILDING.
 - REFERENCE DECK PLANS FOR EXTERIOR DECKS.
 - SEE BUILDING PLANS FOR INTERIOR WALL, PARTY WALL, OR CORRIDOR WALL INFORMATION AND DIMENSIONS.
 - 11B MOBILITY AND COMMUNICATION UNITS TO COMPLY WITH IBC SECTION 11B-809. SEE CODE COMPLIANCE SHEETS FOR DETAILS, G1 SERIES. SEE ELECTRICAL DRAWINGS FOR ADDITIONAL COMMUNICATION FEATURES.
 - RESIDENTIAL DWELLING UNITS WITH COMMUNICATIONS FEATURES PER IBC 11B-809.5 EACH ROOM TO BE PROVIDED WITH THE CAPABILITY OF A FUTURE VISIBLE ALARM APPLIANCE. THE SAME VISIBLE ALARM APPLIANCE SHALL BE PERMITTED UNIT SMOKE DETECTION, BUILDING FIRE ALARM ACTIVATION, AND CARBON MONOXIDE DETECTION. PROVIDE ONE VISIBLE SIGNAL FOR THE DOORBELL WITHIN THE DWELLING UNIT. SEE ELECTRICAL DRAWINGS FOR MORE INFORMATION.

- CEILING PLAN NOTES**
- CEILING HEIGHTS FROM T.O. FINISH FLOOR TO FACE OF CEILING GYP.
 - EXTERIOR SOFFIT HEIGHTS FROM T.O. FINISH FLOOR TO FACE OF EXTERIOR SOFFIT MATERIAL.
 - ALL DIMENSIONS TO F.O. STUD, (U.O.N.)
 - FOR CEILING DIFFUSERS, REGISTERS, AND VENTS TYPES, S.M.D.
 - FOR FURTHER INFORMATION REGARDING CEILING FIXTURES TYPES, S.E.D.
 - LOCATE LIGHTING FIXTURE @ CENTER OF CEILING U.O.N.
 - FOR FURTHER INFORMATION REGARDING FIRE SPRINKLERS AND LOCATIONS SEE DESIGN-BUILD SPRINKLER DRAWINGS. ALL SPRINKLER HEADS SHALL BE LOCATED AT THE CENTER OF CEILING TILES, & SOFFITS TYP. U.O.N. INSTALLER SHALL COORDINATE INSTALLATION WITH OTHER TRADES TO AVOID CONFLICTS.
 - COORDINATE ALL FRAMING AT RECESSED FIXTURE LOCATIONS TO ACCOMMODATE FIXTURE LAYOUT PRIOR TO FRAMING.
 - SOFFIT WIDTH DIMENSIONS ARE FROM FACE OF STUD TO OUTER FINISH EDGE OF SOFFIT GYP. BOARD.
 - SOFFIT LOCATIONS VARY PER UNIT. S.M.D. AND SEE BUILDING PLANS FOR LOCATIONS.
 - STENCIL THE FOLLOWING TEXT: "FIRE AND/OR SMOKE BARRIER - PROTECT ALL OPENINGS" IN CONCEALED SPACE ABOVE CEILINGS ON BOTH SIDES OF 1-HR RATED WALLS



1 UNIT A2.1
1/4" = 1'-0"

REFLECTED CEILING SYMBOLS	
	INTERIOR FINISH MATERIAL
	GYP BOARD, PAINTED
	ALIGN
	FIRE SPRINKLER
	MECH. REGISTERS (S.M.D.)
	TRANSFER GRILLES
	LIGHT FIXTURES (S.E.D.)
	RANGE HOOD

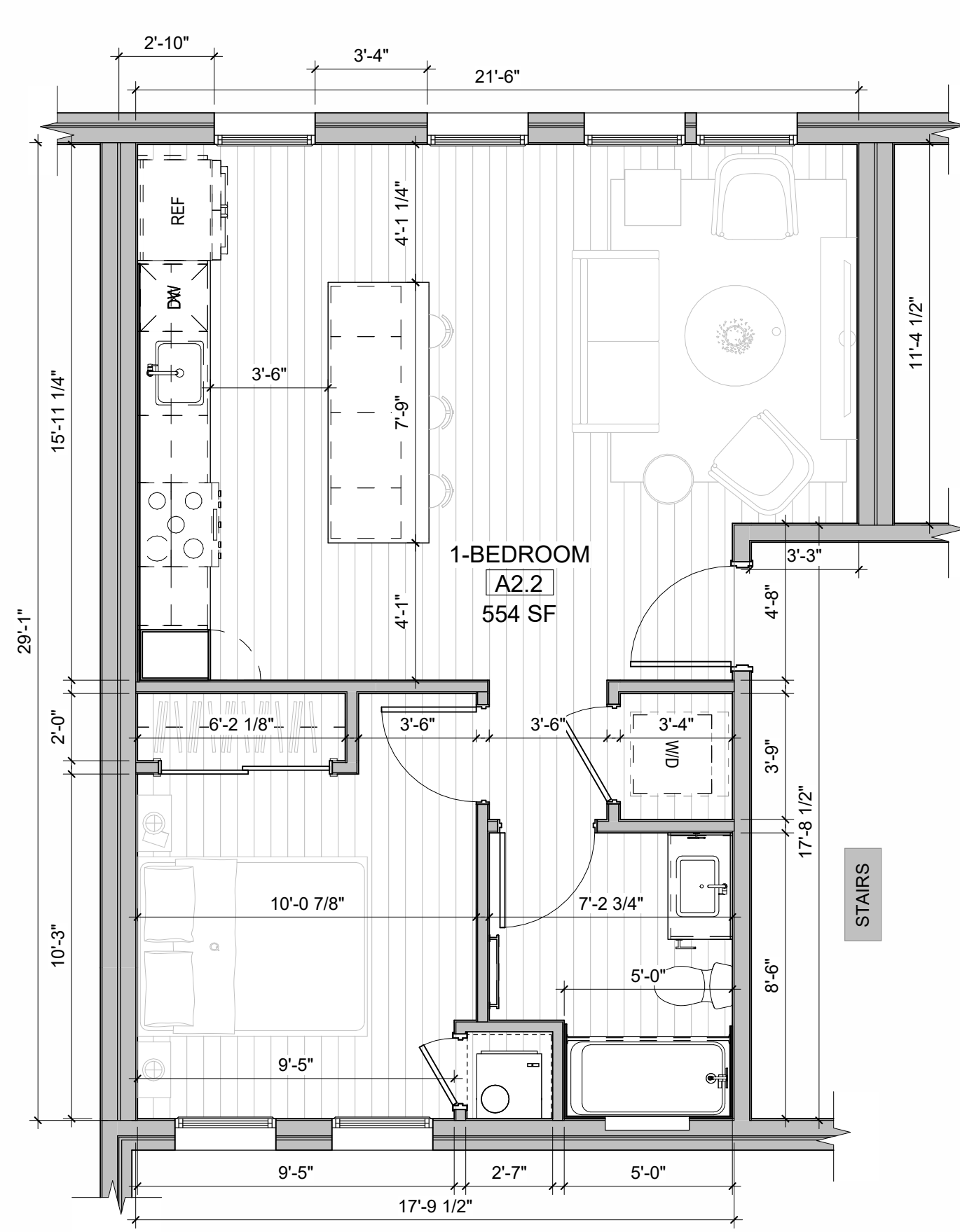
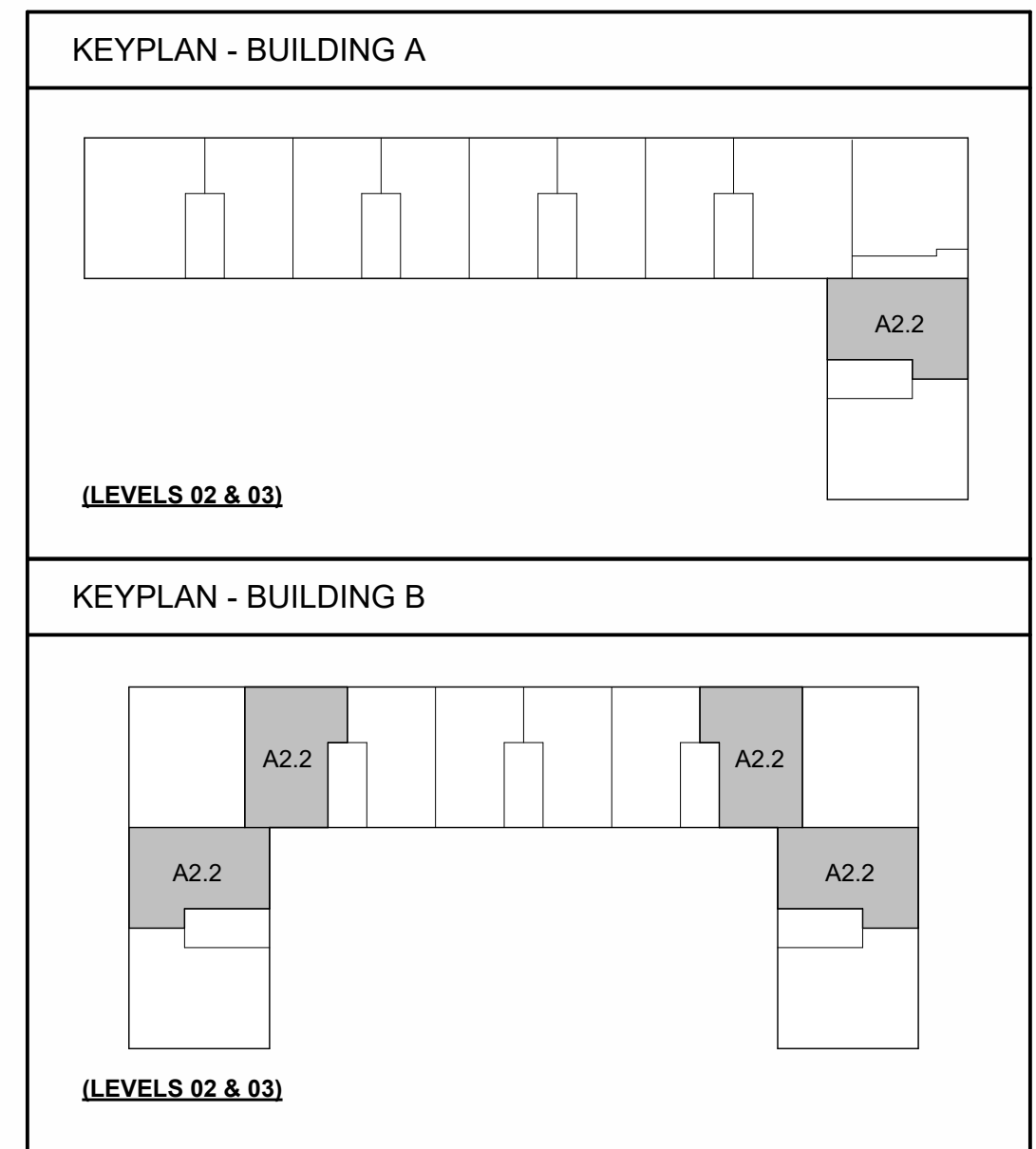


UNIT PLAN SYMBOLS	
	SEMI RECESSED FIRE EXTINGUISHER CABINET WITH FIRE EXTINGUISHER.
	STRUCTURAL COLUMNS, S.S.D.
	60" DIAMETER WHEELCHAIR CLEARANCE
	T-SHAPED TURNING WHEELCHAIR CLEARANCE
	30" X 48" CLEAR FLOOR SPACE
	30" X 60" CLEAR FLOOR SPACE
	WALL TYPE - SEE SHEET XXXX
	WINDOW TYPE - SEE WINDOW SCHEDULE SHEETS
	DOOR TYPE - SEE DOOR SCHEDULE SHEETS
	ROOM NUMBER
	RECESSED MEDICINE CABINET W/ BTM USABLE SHELF AT +44" HT. MAXIMUM
	SLIDE-IN LINEN CABINET
	1 SHELF & 1 POLE
	15" WIDE BREAD BOARD
	30"x60" TUB/SHOWER W/ SURROUND ON 3 WALLS WITH A HEIGHT NOT LESS THAN 72" ABOVE DRAIN INLET. SHOWER HEAD AT +78" SEE INTERIOR ELEVATIONS AND S.P.D.
	LAVATORY S.P.D.
	24" TOWEL BAR AT +40" HT. MAXIMUM TO TOP OF BAR
	TOILET PAPER HOLDER AT +24" HT. TO TOP
	KITCHEN SINK W/ GARBAGE DISPOSAL, S.P.D.
	DISHWASHER W/ DRAIN TO GARBAGE DISPOSAL, S.P.D.
	FREE STANDING RANGE/OVEN COMBINATION W/HOOD, LIGHT & FAN ABOVE. S.M.D AND S.E.D.
	RANGE HOOD, S.M.D.
	REFRIGERATOR
	DRYER PROVIDE SMOOTH METAL VENT TO EXTERIOR, S.M.D.
	WASHER-PROVIDE HOT & COLD WATER SUPPLY & WASTE LINE W/PAN AND DRAIN TO OUTSIDE AT ALL UPPER FLOOR LOCATIONS, S.P.D.
	STACKED WASHER & DRYER-PROVIDE HOT & COLD WATER SUPPLY & WASTE SUPPLY & WASTE LINE FOR WASHER. PROVIDE SMOOTH METAL VENT TO EXTERIOR FOR DRYER. PROVIDE PAN W/DRAIN TO OUTSIDE AT ALL UPPER FLOOR LOCATIONS, S.P.D., S.M.D.
	FLOOR TYPE TRANSITION
	ELECTRICAL PANEL, S.E.D.
	GRAB BARS

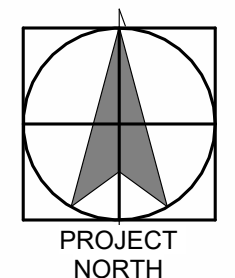
- UNIT PLAN NOTES**
- ALL EXTERIOR DIMENSIONS TO FACE OF STUD, FACE OF FOUNDATION, (U.O.N.)
 - ALL INTERIOR DIMENSIONS TO FACE OF STUD (U.O.N.)
 - ALL DIMENSIONS AT WINDOWS & DOORS ARE TO THE CENTERLINE, (U.O.N.)
 - ALL ANGLED WALLS SHALL BE 45 DEGREES, (U.O.N.)
 - ALL INTERIOR DOOR JAMBS ON HINGE SIDE SHALL BE 4" U.O.N. ALL EXTERIOR DOOR JAMBS ON HINGE SIDE SHALL BE 6" U.O.N.
 - DIMENSIONS FOR TYPICAL UNIT FLOOR PLAN APPLY TO OTHER UNIT TYPES EXCEPT WHERE INDICATED ON VARIATION UNIT PLANS. VARIATION UNIT PLANS INDICATE MODIFICATIONS FROM TYPICAL UNIT PLAN.
 - ALL EXTERIOR WALLS SHALL BE CONSTRUCTED OF 2X6 STUDS, U.O.N., S.S.D.
 - ALL INTERIOR WALLS SHALL BE CONSTRUCTED OF 2X4 STUDS, U.O.N., S.S.D.
 - WINDOW HEAD HEIGHTS: 8'-0" U.O.N.
 - VERIFY APPLIANCE DIMENSIONS PRIOR TO CABINET FABRICATION
 - FOR TYP. FIRE RATED ASSEMBLY DETAILS SEE G3 SERIES.
 - FOR TYP. FIRE RATED PENETRATION DETAILS SEE G3 SERIES.
 - FOR ACCESSIBILITY DETAILS AND NOTES SEE G1 SERIES.
 - FOR DIMENSIONS TO WINDOW AND DOOR OPENINGS REFER TO BUILDING PLAN SHEETS, A2 SERIES.
 - FOR INTERIOR FINISHES, SEE UNIT FINISH SCHEDULE.
 - FOR INTERIOR UNIT DOORS, REFERENCE DOOR SCHEDULE - UNITS.
 - FOR ENTRY DOORS AND PATIO DOORS SEE FLOOR PLANS AND DOOR SCHEDULE - BUILDING.
 - REFERENCE DECK PLANS FOR EXTERIOR DECKS.
 - SEE BUILDING PLANS FOR INTERIOR WALL, PARTY WALL, OR CORRIDOR WALL INFORMATION AND DIMENSIONS.
 - 11B MOBILITY AND COMMUNICATION UNITS TO COMPLY WITH IBC SECTION 11B-809. SEE CODE COMPLIANCE SHEETS FOR DETAILS, G1 SERIES. SEE ELECTRICAL DRAWINGS FOR ADDITIONAL COMMUNICATION FEATURES.
 - RESIDENTIAL DWELLING UNITS WITH COMMUNICATIONS FEATURES PER IBC 11B-809.5 EACH ROOM TO BE PROVIDED WITH THE CAPABILITY OF A FUTURE VISIBLE ALARM APPLIANCE. THE SAME VISIBLE ALARM APPLIANCE SHALL BE PERMITTED UNIT SMOKE DETECTION, BUILDING FIRE ALARM ACTIVATION, AND CARBON MONOXIDE DETECTION. PROVIDE ONE VISIBLE SIGNAL FOR THE DOORBELL WITHIN THE DWELLING UNIT. SEE ELECTRICAL DRAWINGS FOR MORE INFORMATION.

- CEILING PLAN NOTES**
- CEILING HEIGHTS FROM T.O. FINISH FLOOR TO FACE OF CEILING GYP.
 - EXTERIOR SOFFIT HEIGHTS FROM T.O. FINISH FLOOR TO FACE OF EXTERIOR SOFFIT MATERIAL.
 - ALL DIMENSIONS TO F.O. STUD, (U.O.N.)
 - FOR CEILING DIFFUSERS, REGISTERS, AND VENTS TYPES, S.M.D.
 - FOR FURTHER INFORMATION REGARDING CEILING FIXTURES TYPES, S.E.D.
 - LOCATE LIGHTING FIXTURE @ CENTER OF CEILING U.O.N.
 - FOR FURTHER INFORMATION REGARDING FIRE SPRINKLERS AND LOCATIONS SEE DESIGN-BUILD SPRINKLER DRAWINGS. ALL SPRINKLER HEADS SHALL BE LOCATED AT THE CENTER OF CEILING TILES, & SOFFITS TYP. U.O.N. INSTALLER SHALL COORDINATE INSTALLATION WITH OTHER TRADES TO AVOID CONFLICTS.
 - COORDINATE ALL FRAMING AT RECESSED FIXTURE LOCATIONS TO ACCOMMODATE FIXTURE LAYOUT PRIOR TO FRAMING.
 - SOFFIT WIDTH DIMENSIONS ARE FROM FACE OF STUD TO OUTER FINISH EDGE OF SOFFIT GYP. BOARD.
 - SOFFIT LOCATIONS VARY PER UNIT. S.M.D. AND SEE BUILDING PLANS FOR LOCATIONS.
 - STENCIL THE FOLLOWING TEXT: "FIRE AND/OR SMOKE BARRIER - PROTECT ALL OPENINGS" IN CONCEALED SPACE ABOVE CEILINGS ON BOTH SIDES OF 1-HR RATED WALLS

REFLECTED CEILING SYMBOLS	
	INTERIOR FINISH MATERIAL
	GYP BOARD, PAINTED
	ALIGN
	FIRE SPRINKLER
	MECH. REGISTERS (S.M.D.)
	TRANSFER GRILLES
	RANGE HOOD
	LIGHT FIXTURES (S.E.D.)



UNIT A2.2
1/4" = 1'-0"



UNIT PLAN NOTES

- ALL EXTERIOR DIMENSIONS TO FACE OF STUD, FACE OF FOUNDATION, (U.O.N.)
- ALL INTERIOR DIMENSIONS TO FACE OF STUD (U.O.N.)
- ALL DIMENSIONS AT WINDOWS & DOORS ARE TO THE CENTERLINE, (U.O.N.)
- ALL ANGLED WALLS SHALL BE 45 DEGREES, (U.O.N.)
- ALL INTERIOR DOOR JAMBS ON HINGE SIDE SHALL BE 4" U.O.N. ALL EXTERIOR DOOR JAMBS ON HINGE SIDE SHALL BE 6" U.O.N.
- DIMENSIONS FOR TYPICAL UNIT FLOOR PLAN APPLY TO OTHER UNIT TYPES EXCEPT WHERE INDICATED ON VARIATION UNIT PLANS. VARIATION UNIT PLANS INDICATE MODIFICATIONS FROM TYPICAL UNIT PLAN.
- ALL EXTERIOR WALLS SHALL BE CONSTRUCTED OF 2X6 STUDS, U.O.N., S.S.D.
- ALL INTERIOR WALLS SHALL BE CONSTRUCTED OF 2X4 STUDS, U.O.N., S.S.D.
- WINDOW HEAD HEIGHTS: 8'-0" U.O.N.
- VERIFY APPLIANCE DIMENSIONS PRIOR TO CABINET FABRICATION
- FOR TYP. FIRE RATED ASSEMBLY DETAILS SEE G3 SERIES.
- FOR TYP. FIRE RATED PENETRATION DETAILS SEE G3 SERIES.
- FOR ACCESSIBILITY DETAILS AND NOTES SEE G1 SERIES.
- FOR DIMENSIONS TO WINDOW AND DOOR OPENINGS REFER TO BUILDING PLAN SHEETS, A2 SERIES.
- FOR INTERIOR FINISHES, SEE UNIT FINISH SCHEDULE.
- FOR INTERIOR UNIT DOORS, REFERENCE DOOR SCHEDULE - UNITS.
- FOR ENTRY DOORS AND PATIO DOORS SEE FLOOR PLANS AND DOOR SCHEDULE - BUILDING.
- REFERENCE DECK PLANS FOR EXTERIOR DECKS.
- SEE BUILDING PLANS FOR INTERIOR WALL, PARTY WALL, OR CORRIDOR WALL INFORMATION AND DIMENSIONS.
- 11B MOBILITY AND COMMUNICATION UNITS TO COMPLY WITH IBC SECTION 11B-809. SEE CODE COMPLIANCE SHEETS FOR DETAILS, G1 SERIES. SEE ELECTRICAL DRAWINGS FOR ADDITIONAL COMMUNICATION FEATURES.
- RESIDENTIAL DWELLING UNITS WITH COMMUNICATIONS FEATURES PER IBC 11B-809.5 EACH ROOM TO BE PROVIDED WITH THE CAPABILITY OF A FUTURE VISIBLE ALARM APPLIANCE. THE SAME VISIBLE ALARM APPLIANCE SHALL BE PERMITTED UNIT SMOKE DETECTION, BUILDING FIRE ALARM ACTIVATION, AND CARBON MONOXIDE DETECTION. PROVIDE ONE VISIBLE SIGNAL FOR THE DOORBELL WITHIN THE DWELLING UNIT. SEE ELECTRICAL DRAWINGS FOR MORE INFORMATION.

CEILING PLAN NOTES

- CEILING HEIGHTS FROM T.O. FINISH FLOOR TO FACE OF CEILING GYP.
- EXTERIOR SOFFIT HEIGHTS FROM T.O. FINISH FLOOR TO FACE OF EXTERIOR SOFFIT MATERIAL.
- ALL DIMENSIONS TO F.O. STUD, (U.O.N.)
- FOR CEILING DIFFUSERS, REGISTERS, AND VENTS TYPES, S.M.D.
- FOR FURTHER INFORMATION REGARDING CEILING FIXTURES TYPES, S.E.D.
- LOCATE LIGHTING FIXTURE @ CENTER OF CEILING U.O.N.
- FOR FURTHER INFORMATION REGARDING FIRE SPRINKLERS AND LOCATIONS SEE DESIGN-BUILD SPRINKLER DRAWINGS. ALL SPRINKLER HEADS SHALL BE LOCATED AT THE CENTER OF CEILING TILES, & SOFFITS TYP. U.O.N. INSTALLER SHALL COORDINATE INSTALLATION WITH OTHER TRADES TO AVOID CONFLICTS.
- COORDINATE ALL FRAMING AT RECESSED FIXTURE LOCATIONS TO ACCOMMODATE FIXTURE LAYOUT PRIOR TO FRAMING.
- SOFFIT WIDTH DIMENSIONS ARE FROM FACE OF STUD TO OUTER FINISH EDGE OF SOFFIT GYP. BOARD.
- SOFFIT LOCATIONS VARY PER UNIT. S.M.D. AND SEE BUILDING PLANS FOR LOCATIONS.
- STENCIL THE FOLLOWING TEXT: "FIRE AND/OR SMOKE BARRIER - PROTECT ALL OPENINGS" IN CONCEALED SPACE ABOVE CEILINGS ON BOTH SIDES OF 1-HR RATED WALLS

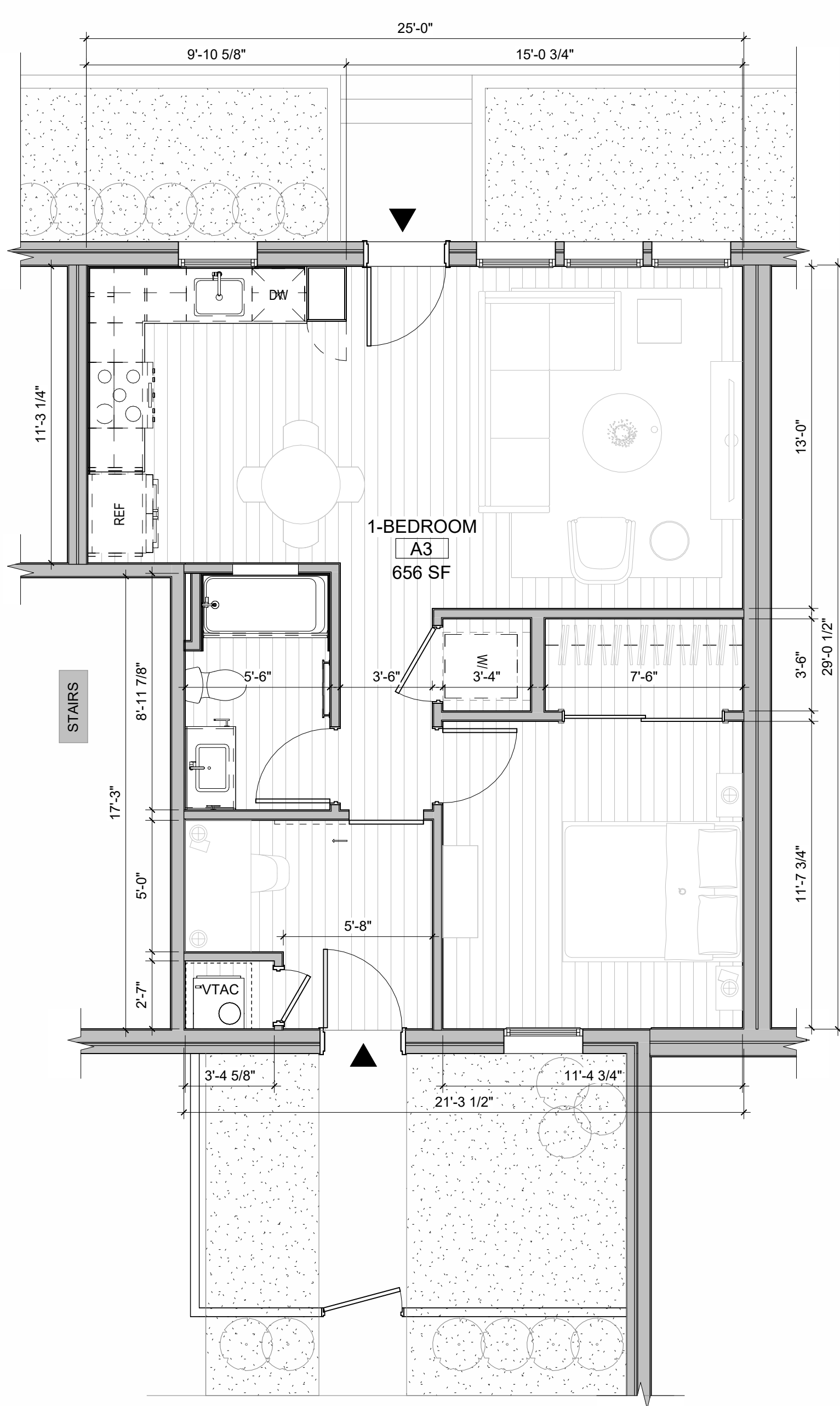
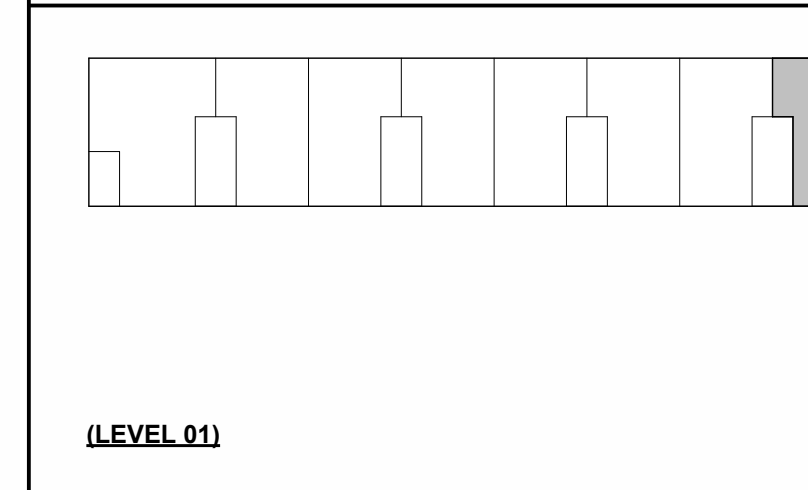
UNIT PLAN SYMBOLS

- SEMI RECESSED FIRE EXTINGUISHER CABINET WITH FIRE EXTINGUISHER.
- STRUCTURAL COLUMNS, S.S.D.
- 60" DIAMETER WHEELCHAIR CLEARANCE
- T-SHAPED TURNING WHEELCHAIR CLEARANCE
- 30" X 48" CLEAR FLOOR SPACE
- 30" X 60" CLEAR FLOOR SPACE
- WALL TYPE - SEE SHEET XXXX
- WINDOW TYPE - SEE WINDOW SCHEDULE SHEETS
- DOOR TYPE - SEE DOOR SCHEDULE SHEETS
- ROOM NUMBER
- RECESSED MEDICINE CABINET W/ BTM USABLE SHELF AT +44" HT. MAXIMUM
- SLIDE-IN LINEN CABINET
- 1 SHELF & 1 POLE
- 15" WIDE BREAD BOARD
- 30"x60" TUB/SHOWER W/ SURROUND ON 3 WALLS WITH A HEIGHT NOT LESS THAN 72" ABOVE DRAIN INLET. SHOWER HEAD AT +78" SEE INTERIOR ELEVATIONS AND S.P.D.
- LAVATORY S.P.D.
- 24" TOWEL BAR AT +40" HT. MAXIMUM TO TOP OF BAR
- TOILET PAPER HOLDER AT +24" HT. TO TOP
- KITCHEN SINK W/ GARBAGE DISPOSAL, S.P.D.
- DISHWASHER W/ DRAIN TO GARBAGE DISPOSAL, S.P.D.
- FREE STANDING RANGE/OVEN COMBINATION W/HOOD, LIGHT & FAN ABOVE. S.M.D AND S.E.D.
- RANGE HOOD, S.M.D.
- REFRIGERATOR
- DRYER PROVIDE SMOOTH METAL VENT TO EXTERIOR, S.M.D.
- WASHER-PROVIDE HOT & COLD WATER SUPPLY & WASTE LINE W/PAN AND DRAIN TO OUTSIDE AT ALL UPPER FLOOR LOCATIONS, S.P.D.
- STACKED WASHER & DRYER-PROVIDE HOT & COLD WATER SUPPLY & WASTE SUPPLY & WASTE LINE FOR WASHER. PROVIDE SMOOTH METAL VENT TO EXTERIOR FOR DRYER. PROVIDE PAN W/DRAIN TO OUTSIDE AT ALL UPPER FLOOR LOCATIONS, S.P.D., S.M.D.
- FLOOR TYPE TRANSITION
- ELECTRICAL PANEL, S.E.D.
- GRAB BARS

REFLECTED CEILING SYMBOLS

- INTERIOR FINISH MATERIAL
 - GYP BOARD, PAINTED
- ALIGN
- FIRE SPRINKLER
- MECH. REGISTERS (S.M.D.)
- TRANSFER GRILLES
- RANGE HOOD
- LIGHT FIXTURES (S.E.D.)

KEYPLAN - BUILDING A



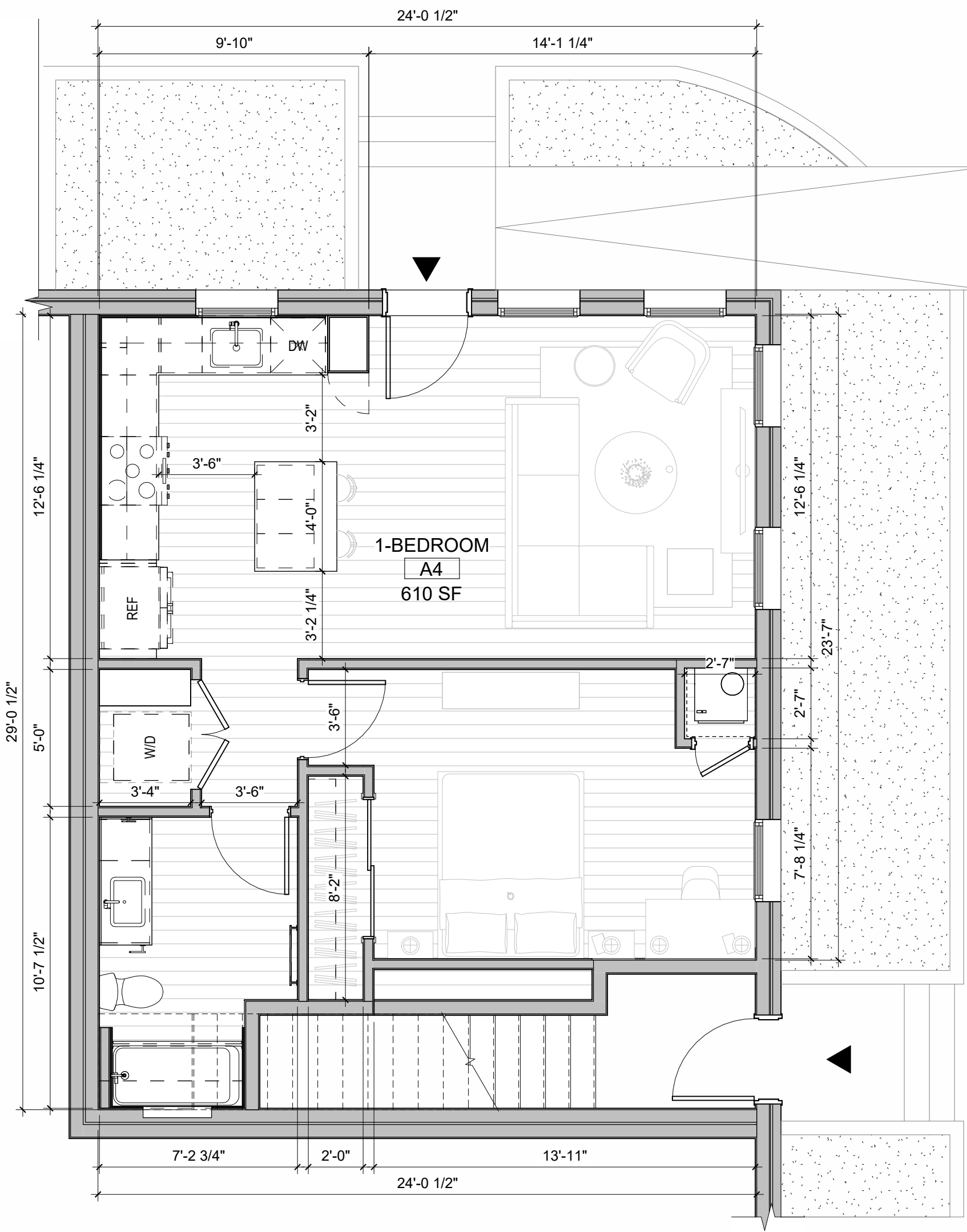
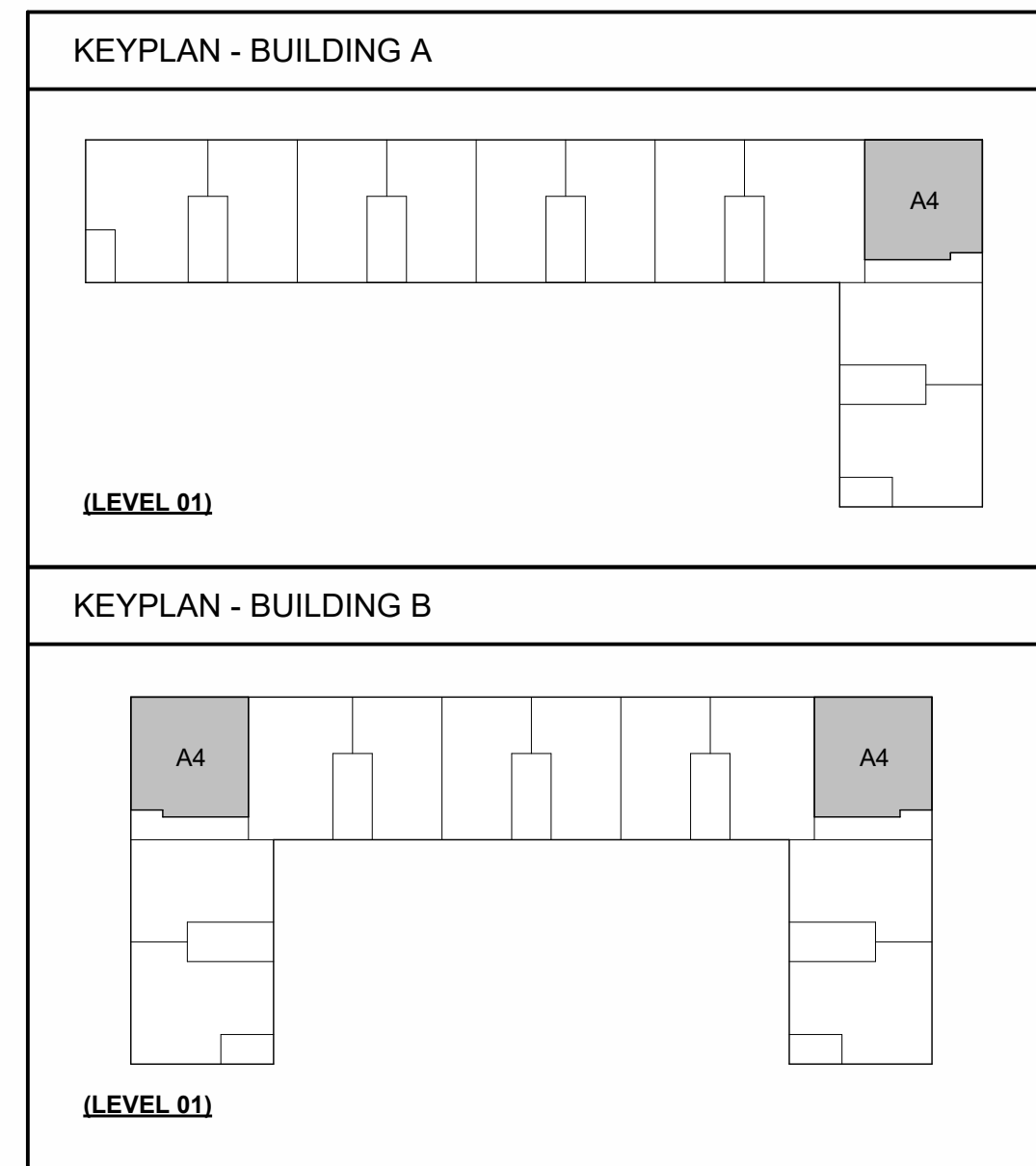
1 UNIT PLAN A3
1/4" = 1'-0"

- ### UNIT PLAN NOTES
- ALL EXTERIOR DIMENSIONS TO FACE OF STUD, FACE OF FOUNDATION, (U.O.N.)
 - ALL INTERIOR DIMENSIONS TO FACE OF STUD (U.O.N.)
 - ALL DIMENSIONS AT WINDOWS & DOORS ARE TO THE CENTERLINE, (U.O.N.)
 - ALL ANGLED WALLS SHALL BE 45 DEGREES, (U.O.N.)
 - ALL INTERIOR DOOR JAMBS ON HINGE SIDE SHALL BE 4" U.O.N. ALL EXTERIOR DOOR JAMBS ON HINGE SIDE SHALL BE 6" U.O.N.
 - DIMENSIONS FOR TYPICAL UNIT FLOOR PLAN APPLY TO OTHER UNIT TYPES EXCEPT WHERE INDICATED ON VARIATION UNIT PLANS. VARIATION UNIT PLANS INDICATE MODIFICATIONS FROM TYPICAL UNIT PLAN.
 - ALL EXTERIOR WALLS SHALL BE CONSTRUCTED OF 2X4 STUDS, U.O.N., S.S.D.
 - ALL INTERIOR WALLS SHALL BE CONSTRUCTED OF 2X4 STUDS, U.O.N., S.S.D.
 - WINDOW HEAD HEIGHTS: 8'-0" U.O.N.
 - VERIFY APPLIANCE DIMENSIONS PRIOR TO CABINET FABRICATION
 - FOR TYP. FIRE RATED ASSEMBLY DETAILS SEE G3 SERIES.
 - FOR TYP. FIRE RATED PENETRATION DETAILS SEE G3 SERIES.
 - FOR ACCESSIBILITY DETAILS AND NOTES SEE G1 SERIES.
 - FOR DIMENSIONS TO WINDOW AND DOOR OPENINGS REFER TO BUILDING PLAN SHEETS, A2 SERIES.
 - FOR INTERIOR FINISHES, SEE UNIT FINISH SCHEDULE.
 - FOR INTERIOR UNIT DOORS, REFERENCE DOOR SCHEDULE - UNITS.
 - FOR ENTRY DOORS AND PATIO DOORS SEE FLOOR PLANS AND DOOR SCHEDULE - BUILDING.
 - REFERENCE DECK PLANS FOR EXTERIOR DECKS.
 - SEE BUILDING PLANS FOR INTERIOR WALL, PARTY WALL, OR CORRIDOR WALL INFORMATION AND DIMENSIONS.
 - 11B MOBILITY AND COMMUNICATION UNITS TO COMPLY WITH IBC SECTION 11B-809. SEE CODE COMPLIANCE SHEETS FOR DETAILS, G1 SERIES. SEE ELECTRICAL DRAWINGS FOR ADDITIONAL COMMUNICATION FEATURES.
 - RESIDENTIAL DWELLING UNITS WITH COMMUNICATIONS FEATURES PER IBC 11B-809.5 EACH ROOM TO BE PROVIDED WITH THE CAPABILITY OF A FUTURE VISIBLE ALARM APPLIANCE. THE SAME VISIBLE ALARM APPLIANCE SHALL BE PERMITTED UNIT SMOKE DETECTION, BUILDING FIRE ALARM ACTIVATION, AND CARBON MONOXIDE DETECTION. PROVIDE ONE VISIBLE SIGNAL FOR THE DOORBELL WITHIN THE DWELLING UNIT. SEE ELECTRICAL DRAWINGS FOR MORE INFORMATION.

- ### CEILING PLAN NOTES
- CEILING HEIGHTS FROM T.O. FINISH FLOOR TO FACE OF CEILING GYP.
 - EXTERIOR SOFFIT HEIGHTS FROM T.O. FINISH FLOOR TO FACE OF EXTERIOR SOFFIT MATERIAL.
 - ALL DIMENSIONS TO F.O. STUD, (U.O.N.)
 - FOR CEILING DIFFUSERS, REGISTERS, AND VENTS TYPES, S.M.D.
 - FOR FURTHER INFORMATION REGARDING CEILING FIXTURES TYPES, S.E.D.
 - LOCATE LIGHTING FIXTURE @ CENTER OF CEILING U.O.N.
 - FOR FURTHER INFORMATION REGARDING FIRE SPRINKLERS AND LOCATIONS SEE DESIGN-BUILD SPRINKLER DRAWINGS. ALL SPRINKLER HEADS SHALL BE LOCATED AT THE CENTER OF CEILING TILES, & SOFFITS TYP. U.O.N. INSTALLER SHALL COORDINATE INSTALLATION WITH OTHER TRADES TO AVOID CONFLICTS.
 - COORDINATE ALL FRAMING AT RECESSED FIXTURE LOCATIONS TO ACCOMMODATE FIXTURE LAYOUT PRIOR TO FRAMING.
 - SOFFIT WIDTH DIMENSIONS ARE FROM FACE OF STUD TO OUTER FINISH EDGE OF SOFFIT GYP. BOARD.
 - SOFFIT LOCATIONS VARY PER UNIT. S.M.D. AND SEE BUILDING PLANS FOR LOCATIONS.
 - STENCIL THE FOLLOWING TEXT: "FIRE AND/OR SMOKE BARRIER - PROTECT ALL OPENINGS" IN CONCEALED SPACE ABOVE CEILINGS ON BOTH SIDES OF 1-HR RATED WALLS

- ### UNIT PLAN SYMBOLS
- SEMI RECESSED FIRE EXTINGUISHER CABINET WITH FIRE EXTINGUISHER.
 - STRUCTURAL COLUMNS, S.S.D.
 - 60" DIAMETER WHEELCHAIR CLEARANCE
 - T-SHAPED TURNING WHEELCHAIR CLEARANCE
 - 30" X 48" CLEAR FLOOR SPACE
 - 30" X 60" CLEAR FLOOR SPACE
 - WALL TYPE - SEE SHEET XXXX
 - WINDOW TYPE - SEE WINDOW SCHEDULE SHEETS
 - DOOR TYPE - SEE DOOR SCHEDULE SHEETS
 - ROOM NUMBER
 - RECESSED MEDICINE CABINET W/ BTM USABLE SHELF AT +44" HT. MAXIMUM
 - SLIDE-IN LINEN CABINET
 - 1 SHELF & 1 POLE
 - 15" WIDE BREAD BOARD
 - 30"x60" TUB/SHOWER W/ SURROUND ON 3 WALLS WITH A HEIGHT NOT LESS THAN 72" ABOVE DRAIN INLET. SHOWER HEAD AT +78" SEE INTERIOR ELEVATIONS AND S.P.D.
 - LAVATORY S.P.D.
 - 24" TOWEL BAR AT +40" HT. MAXIMUM TO TOP OF BAR
 - TOILET PAPER HOLDER AT +24" HT. TO TOP
 - KITCHEN SINK W/ GARBAGE DISPOSAL, S.P.D.
 - DISHWASHER W/ DRAIN TO GARBAGE DISPOSAL, S.P.D.
 - FREE STANDING RANGE/OVEN COMBINATION W/HOOD, LIGHT & FAN ABOVE. S.M.D AND S.E.D.
 - RANGE HOOD, S.M.D.
 - REFRIGERATOR
 - DRYER PROVIDE SMOOTH METAL VENT TO EXTERIOR, S.M.D.
 - WASHER-PROVIDE HOT & COLD WATER SUPPLY & WASTE LINE W/PAN AND DRAIN TO OUTSIDE AT ALL UPPER FLOOR LOCATIONS, S.P.D.
 - STACKED WASHER & DRYER-PROVIDE HOT & COLD WATER SUPPLY & WASTE SUPPLY & WASTE LINE FOR WASHER. PROVIDE SMOOTH METAL VENT TO EXTERIOR FOR DRYER. PROVIDE PAN W/DRAIN TO OUTSIDE AT ALL UPPER FLOOR LOCATIONS, S.P.D., S.M.D.
 - FLOOR TYPE TRANSITION
 - ELECTRICAL PANEL, S.E.D.
 - GRAB BARS

- ### REFLECTED CEILING SYMBOLS
- INTERIOR FINISH MATERIAL
 - GYP BOARD, PAINTED
 - ALIGN
 - FIRE SPRINKLER
 - MECH. REGISTERS (S.M.D.)
 - TRANSFER GRILLES
 - RANGE HOOD
 - LIGHT FIXTURES (S.E.D.)



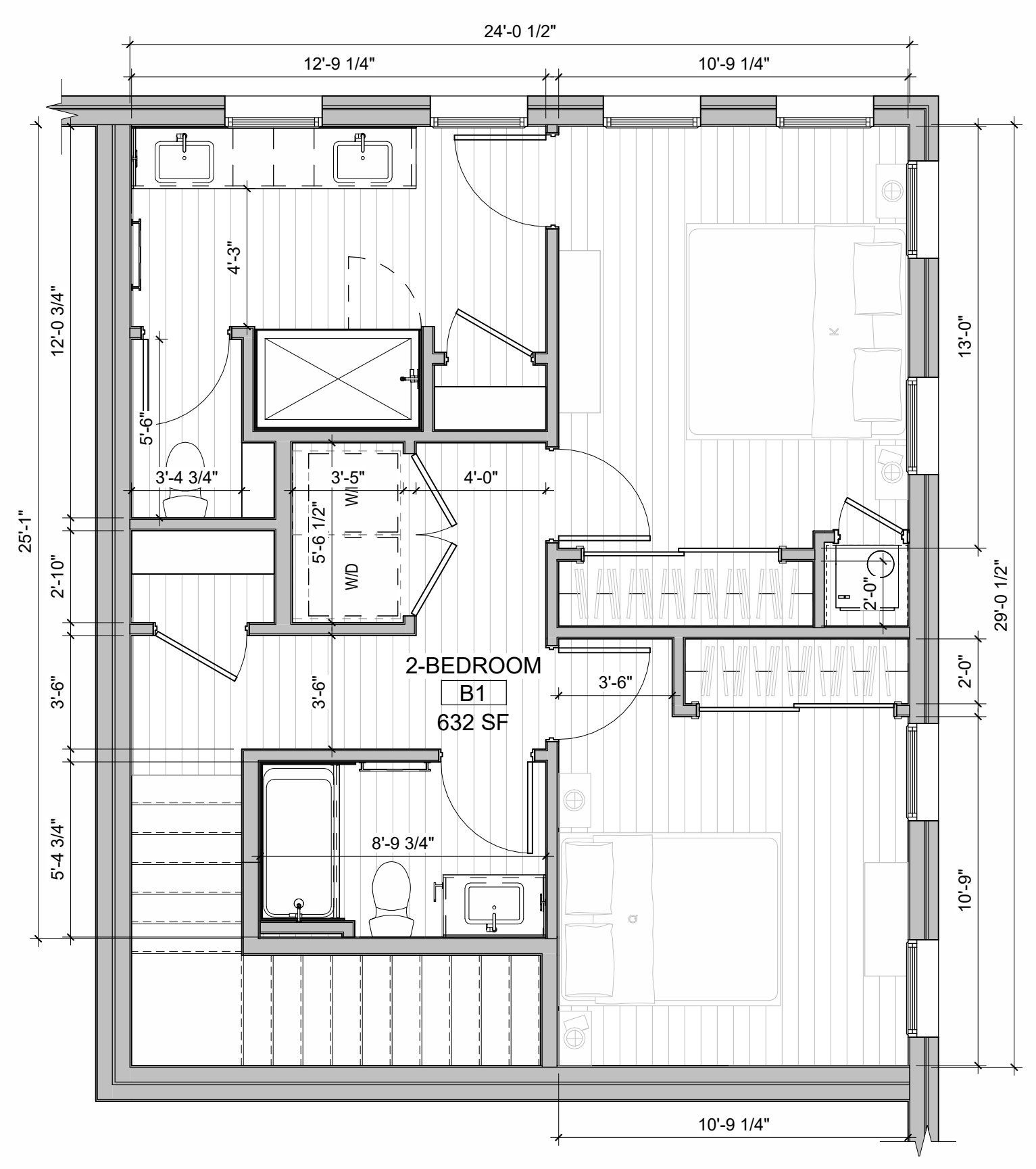
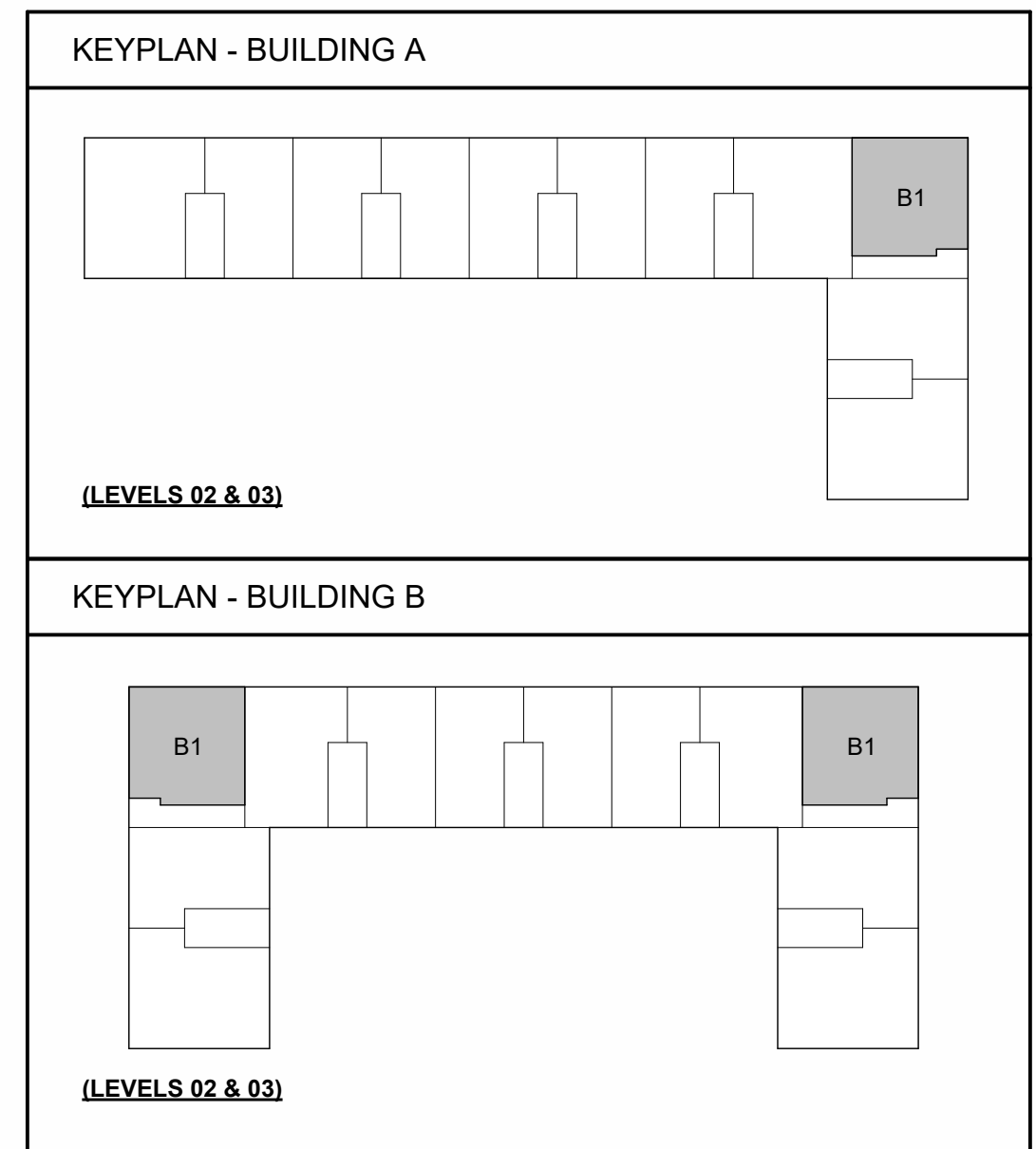
1 UNIT PLAN A4
1/4" = 1'-0"

UNIT PLAN SYMBOLS	
	SEMI RECESSED FIRE EXTINGUISHER CABINET WITH FIRE EXTINGUISHER.
	STRUCTURAL COLUMNS, S.S.D.
	60" DIAMETER WHEELCHAIR CLEARANCE
	T-SHAPED TURNING WHEELCHAIR CLEARANCE
	30" X 48" CLEAR FLOOR SPACE
	30" X 60" CLEAR FLOOR SPACE
	WALL TYPE - SEE SHEET XXXX
	WINDOW TYPE - SEE WINDOW SCHEDULE SHEETS
	DOOR TYPE - SEE DOOR SCHEDULE SHEETS
	ROOM NUMBER
	RECESSED MEDICINE CABINET W/ BTM USABLE SHELF AT +4" HT. MAXIMUM
	SLIDE-IN LINEN CABINET
	1 SHELF & 1 POLE
	15" WIDE BREAD BOARD
	30"x60" TUB/SHOWER W/ SURROUND ON 3 WALLS WITH A HEIGHT NOT LESS THAN 72" ABOVE DRAIN INLET. SHOWER HEAD AT +78" SEE INTERIOR ELEVATIONS AND S.P.D.
	LAVATORY S.P.D.
	24" TOWEL BAR AT +40" HT. MAXIMUM TO TOP OF BAR
	TOILET PAPER HOLDER AT +24" HT. TO TOP
	KITCHEN SINK W/ GARBAGE DISPOSAL, S.P.D.
	DISHWASHER W/ DRAIN TO GARBAGE DISPOSAL, S.P.D.
	FREE STANDING RANGE/OVEN COMBINATION W/HOOD, LIGHT & FAN ABOVE. S.M.D AND S.E.D.
	RANGE HOOD, S.M.D.
	REFRIGERATOR
	DRYER PROVIDE SMOOTH METAL VENT TO EXTERIOR, S.M.D.
	WASHER-PROVIDE HOT & COLD WATER SUPPLY & WASTE LINE W/PAN AND DRAIN TO OUTSIDE AT ALL UPPER FLOOR LOCATIONS, S.P.D.
	STACKED WASHER & DRYER-PROVIDE HOT & COLD WATER SUPPLY & WASTE SUPPLY & WASTE LINE FOR WASHER. PROVIDE SMOOTH METAL VENT TO EXTERIOR FOR DRYER. PROVIDE PAN W/DRAIN TO OUTSIDE AT ALL UPPER FLOOR LOCATIONS, S.P.D., S.M.D.
	FLOOR TYPE TRANSITION
	ELECTRICAL PANEL, S.E.D.
	GRAB BARS

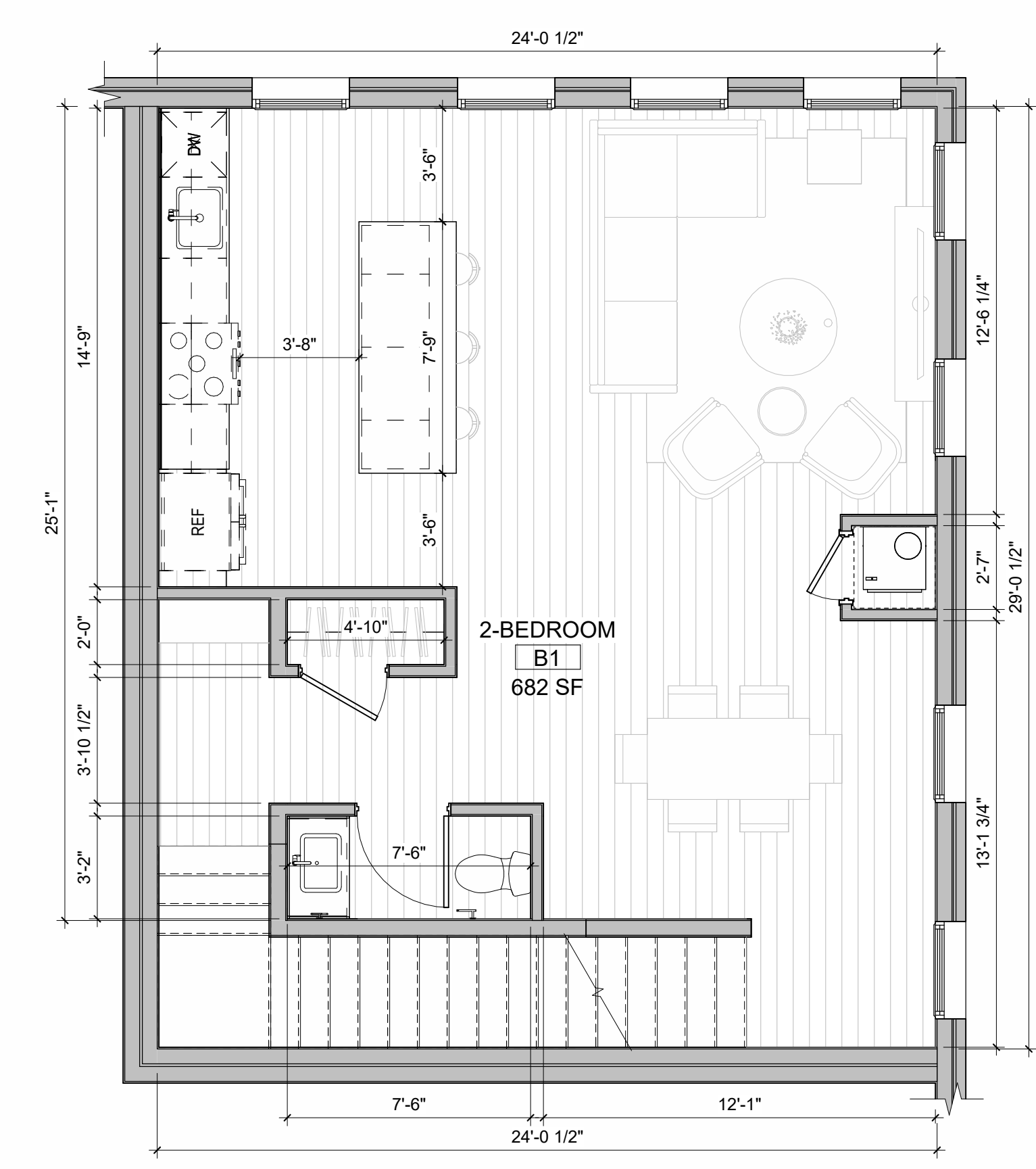
- UNIT PLAN NOTES**
- ALL EXTERIOR DIMENSIONS TO FACE OF STUD, FACE OF FOUNDATION, (U.O.N.)
 - ALL INTERIOR DIMENSIONS TO FACE OF STUD (U.O.N.)
 - ALL DIMENSIONS AT WINDOWS & DOORS ARE TO THE CENTERLINE, (U.O.N.)
 - ALL ANGLED WALLS SHALL BE 45 DEGREES, (U.O.N.)
 - ALL INTERIOR DOOR JAMBS ON HINGE SIDE SHALL BE 4" U.O.N. ALL EXTERIOR DOOR JAMBS ON HINGE SIDE SHALL BE 6" U.O.N.
 - DIMENSIONS FOR TYPICAL UNIT FLOOR PLAN APPLY TO OTHER UNIT TYPES EXCEPT WHERE INDICATED ON VARIATION UNIT PLANS. VARIATION UNIT PLANS INDICATE MODIFICATIONS FROM TYPICAL UNIT PLAN.
 - ALL EXTERIOR WALLS SHALL BE CONSTRUCTED OF 2X4 STUDS, U.O.N., S.S.D.
 - ALL INTERIOR WALLS SHALL BE CONSTRUCTED OF 2X4 STUDS, U.O.N., S.S.D.
 - WINDOW HEAD HEIGHTS: 8'-0" U.O.N.
 - VERIFY APPLIANCE DIMENSIONS PRIOR TO CABINET FABRICATION
 - FOR TYP. FIRE RATED ASSEMBLY DETAILS SEE G3 SERIES.
 - FOR TYP. FIRE RATED PENETRATION DETAILS SEE G3 SERIES.
 - FOR ACCESSIBILITY DETAILS AND NOTES SEE G1 SERIES.
 - FOR DIMENSIONS TO WINDOW AND DOOR OPENINGS REFER TO BUILDING PLAN SHEETS, A2 SERIES.
 - FOR INTERIOR FINISHES, SEE UNIT FINISH SCHEDULE.
 - FOR INTERIOR UNIT DOORS, REFERENCE DOOR SCHEDULE - UNITS.
 - FOR ENTRY DOORS AND PATIO DOORS SEE FLOOR PLANS AND DOOR SCHEDULE - BUILDING.
 - REFERENCE DECK PLANS FOR EXTERIOR DECKS.
 - SEE BUILDING PLANS FOR INTERIOR WALL, PARTY WALL, OR CORRIDOR WALL INFORMATION AND DIMENSIONS.
 - 11B MOBILITY AND COMMUNICATION UNITS TO COMPLY WITH IBC SECTION 11B-809. SEE CODE COMPLIANCE SHEETS FOR DETAILS, G1 SERIES. SEE ELECTRICAL DRAWINGS FOR ADDITIONAL COMMUNICATION FEATURES.
 - RESIDENTIAL DWELLING UNITS WITH COMMUNICATIONS FEATURES PER IBC 11B-809.5 EACH ROOM TO BE PROVIDED WITH THE CAPABILITY OF A FUTURE VISIBLE ALARM APPLIANCE. THE SAME VISIBLE ALARM APPLIANCE SHALL BE PERMITTED UNIT SMOKE DETECTION, BUILDING FIRE ALARM ACTIVATION, AND CARBON MONOXIDE DETECTION. PROVIDE ONE VISIBLE SIGNAL FOR THE DOORBELL WITHIN THE DWELLING UNIT. SEE ELECTRICAL DRAWINGS FOR MORE INFORMATION.

- CEILING PLAN NOTES**
- CEILING HEIGHTS FROM T.O. FINISH FLOOR TO FACE OF CEILING GYP.
 - EXTERIOR SOFFIT HEIGHTS FROM T.O. FINISH FLOOR TO FACE OF EXTERIOR SOFFIT MATERIAL.
 - ALL DIMENSIONS TO F.O. STUD, (U.O.N.)
 - FOR CEILING DIFFUSERS, REGISTERS, AND VENTS TYPES, S.M.D.
 - FOR FURTHER INFORMATION REGARDING CEILING FIXTURES TYPES, S.E.D.
 - LOCATE LIGHTING FIXTURE @ CENTER OF CEILING U.O.N.
 - FOR FURTHER INFORMATION REGARDING FIRE SPRINKLERS AND LOCATIONS SEE DESIGN-BUILD SPRINKLER DRAWINGS. ALL SPRINKLER HEADS SHALL BE LOCATED AT THE CENTER OF CEILING TILES, & SOFFITS TYP. U.O.N. INSTALLER SHALL COORDINATE INSTALLATION WITH OTHER TRADES TO AVOID CONFLICTS.
 - COORDINATE ALL FRAMING AT RECESSED FIXTURE LOCATIONS TO ACCOMMODATE FIXTURE LAYOUT PRIOR TO FRAMING.
 - SOFFIT WIDTH DIMENSIONS ARE FROM FACE OF STUD TO OUTER FINISH EDGE OF SOFFIT GYP. BOARD.
 - SOFFIT LOCATIONS VARY PER UNIT. S.M.D. AND SEE BUILDING PLANS FOR LOCATIONS.
 - STENCIL THE FOLLOWING TEXT: "FIRE AND/OR SMOKE BARRIER - PROTECT ALL OPENINGS" IN CONCEALED SPACE ABOVE CEILINGS ON BOTH SIDES OF 1-HR RATED WALLS

REFLECTED CEILING SYMBOLS	
	INTERIOR FINISH MATERIAL
	GYP BOARD, PAINTED
	ALIGN
	FIRE SPRINKLER
	MECH. REGISTERS (S.M.D.)
	TRANSFER GRILLES
	RANGE HOOD
	LIGHT FIXTURES (S.E.D.)



2 UNIT PLAN B1 - UPPER LEVEL
1/4" = 1'-0"



1 UNIT PLAN B1 - LOWER LEVEL
1/4" = 1'-0"

